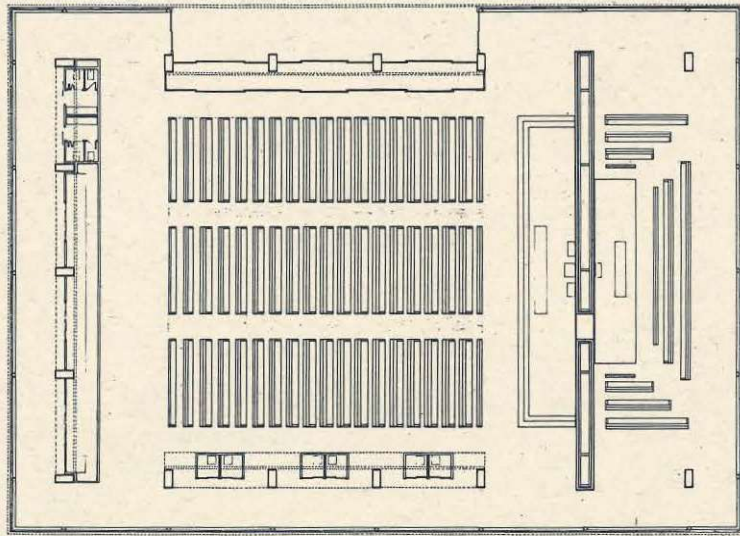


seccion longitudinal/longitudinal section



planta acceso/ground floor plan

Dialogue between two walls: the horizontal represents the human scale, movement, imperfection... the vertical represents the divine scale, tranquillity, silence... both articulate by forming a meeting space. The church is made up of a double skin. An exterior, of closure. An interior, articulates the spaces, controls light, composes the structure.

**MENCION / MENTION** **MUROS**  
ALICIA BANZO VIRGINIA DAROCA MARIA SOTO BLANCA MENDEZ AURORA DEL PRADO

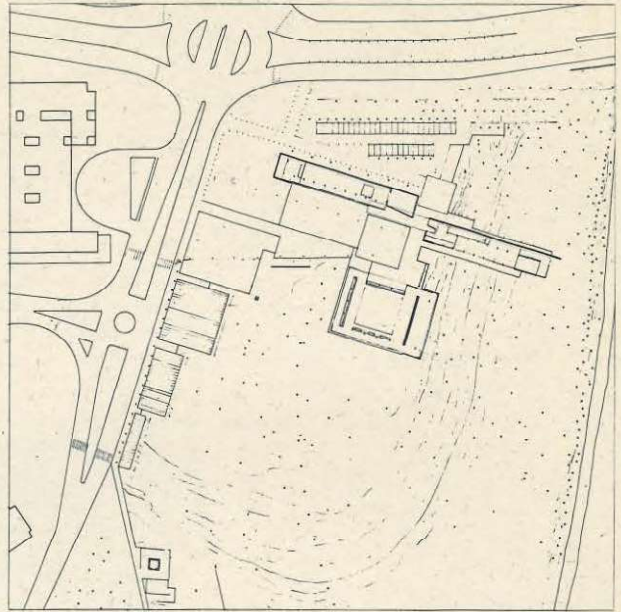
El dialogo entre los dos mundos

el Horizontal representa la escala humana, el movimiento, la imperfección...  
el Vertical representa la escala Divina, la tranquilidad, el silencio...  
ambos se articulan formando el espacio de encuentro

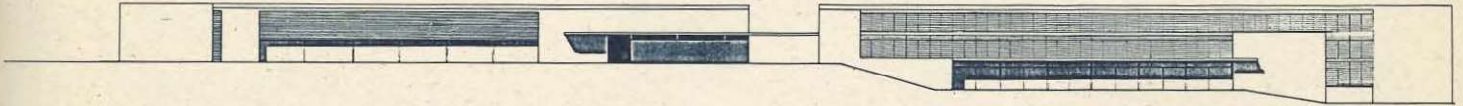
La Iglesia está constituida por una doble piel

una Exterior, de cerramiento  
una Interior, articula los espacios, controla la luz y compone la estructura

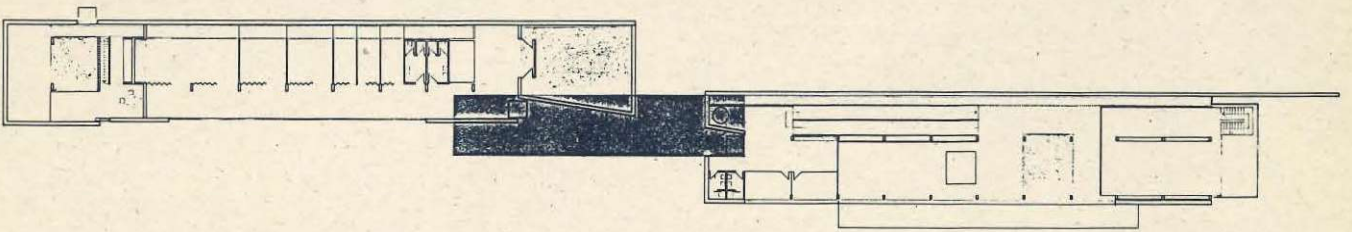




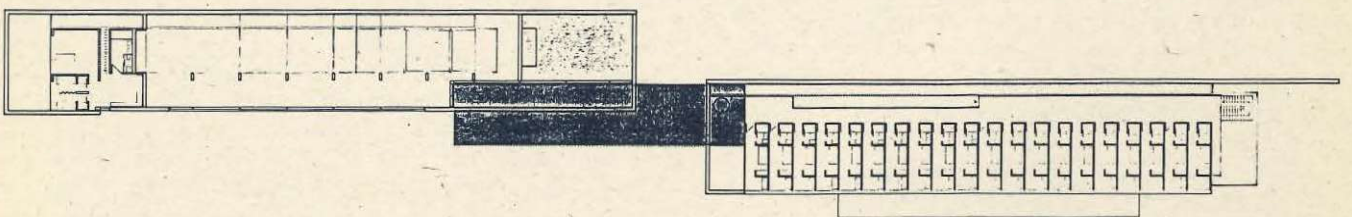
emplazamiento/site



alzado residencia/residence elevation



planta acceso/ground floor plan



planta superior/upper floor plan