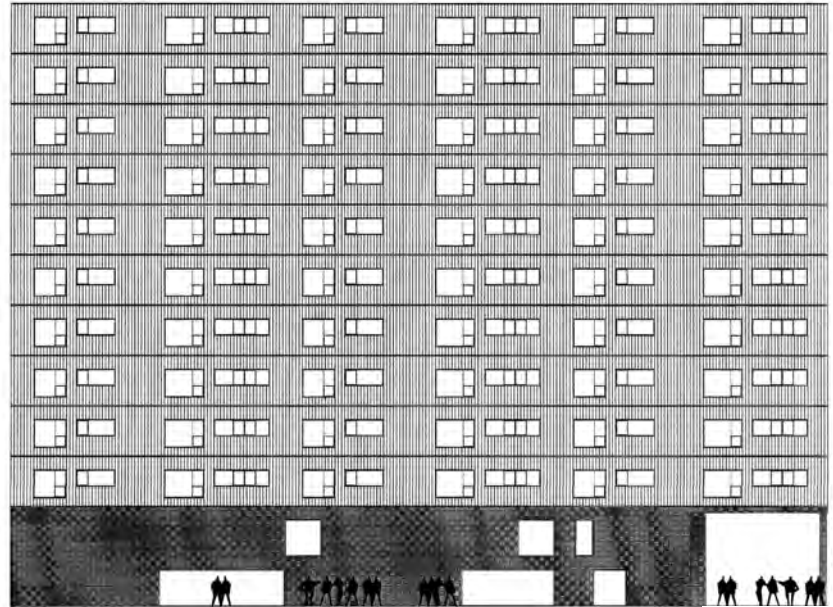


## PROYECTOS II

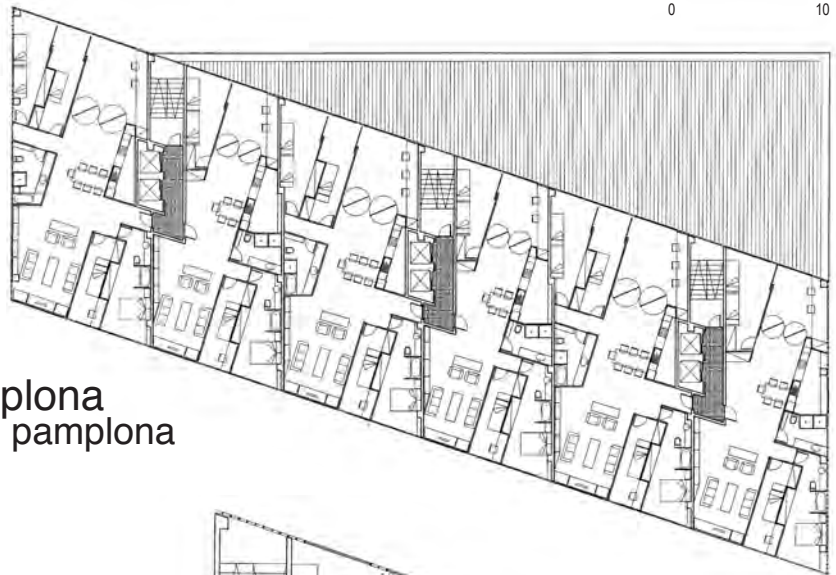
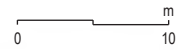
*Profesor:* Miguel Ángel Alonso del Val

*Ayudantes:* Íñigo Beguiristáin  
Laura Martínez de Guereñu  
Jaime Sepulcre

El ejercicio plantea el desarrollo de un edificio de viviendas en altura en una esquina del solar que actualmente ocupa la Residencia de Ancianos de la Casa de la Misericordia en Pamplona, la que corresponde al cruce de la Avenida de Sancho el Fuerte y la calle Esquiroz. La alineación máxima del volumen es un rectángulo fijo de 30x48 metros y la altura máxima es de planta baja más diez más ático, con un retranqueo mínimo de 5 metros. Se permite un vuelo máximo de 1 m a partir de la planta baja, en todo el perímetro. El número de viviendas será de 60. La planta baja se reserva para portales y locales comerciales, el resto se destinará a espacio público o jardín. Se deben alojar en sótano al menos dos plazas de garaje por vivienda, ocupando toda la parcela si se considera necesario, pero con la rampa situada dentro de la edificación de planta baja. Las viviendas tendrán una superficie total interior de 120 m<sup>2</sup> y 150 m<sup>2</sup> útiles, con un programa mínimo de 3/4 habitaciones.



alzado este  
east elevation



planta general  
general floor

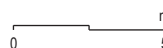
## edificio de viviendas en pamplona apartment building in pamplona

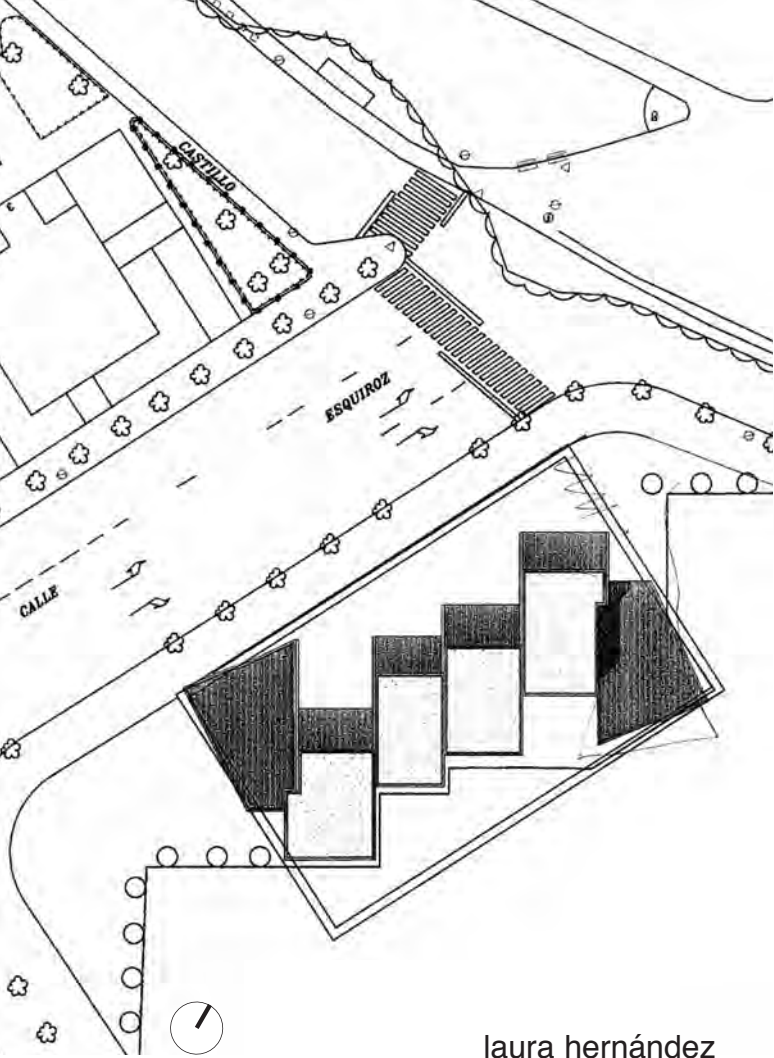
carlos canseco

Develop a highrise apartment building located on a corner of the lot currently occupied by the senior citizens' residence of Pamplona's Casa de la Misericordia, at the intersection of Avenida Sancho el Fuerte and Calle Esquiroz. The maximum ground area of the volume is a fixed rectangle measuring 30x48 meters and the maximum height is the ground floor plus ten more and an attic, with a minimum setback of 5 meters. A maximum projection of 1 meter is allowed at ground level throughout the building's perimeter. The building must provide 60 apartments. Reserve the ground floor for entrances and stores, plus a public space or garden. The basement must provide at least two garage units per apartment, taking up the entire floor area for the purpose if necessary, but with the catwalk situated within the ground floor construction. The apartments will have a total usable area of 120 m<sup>2</sup> and 150 m<sup>2</sup>, in a program of 3-4 bedrooms.



planta tipo  
typical floor





laura hernández



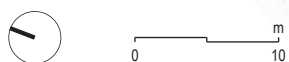
planta tipo (1 a 7)  
typical floor (1 a 7)

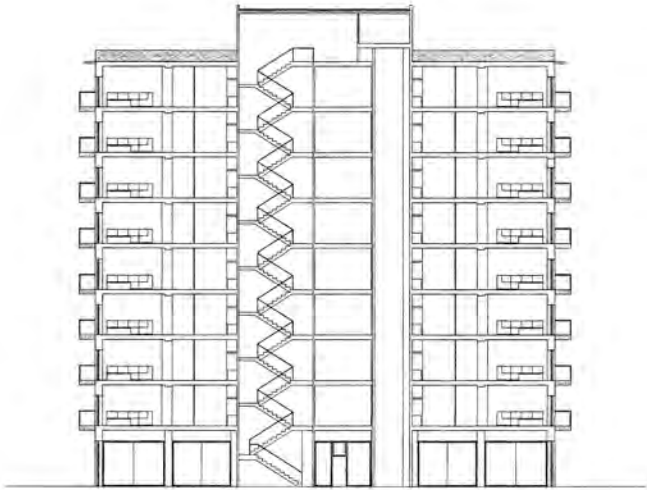


planta primera dúplex tipo (8-10)  
typical duplex first floor (8-10)



planta segunda dúplex (9)  
duplex second floor (9)

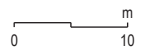




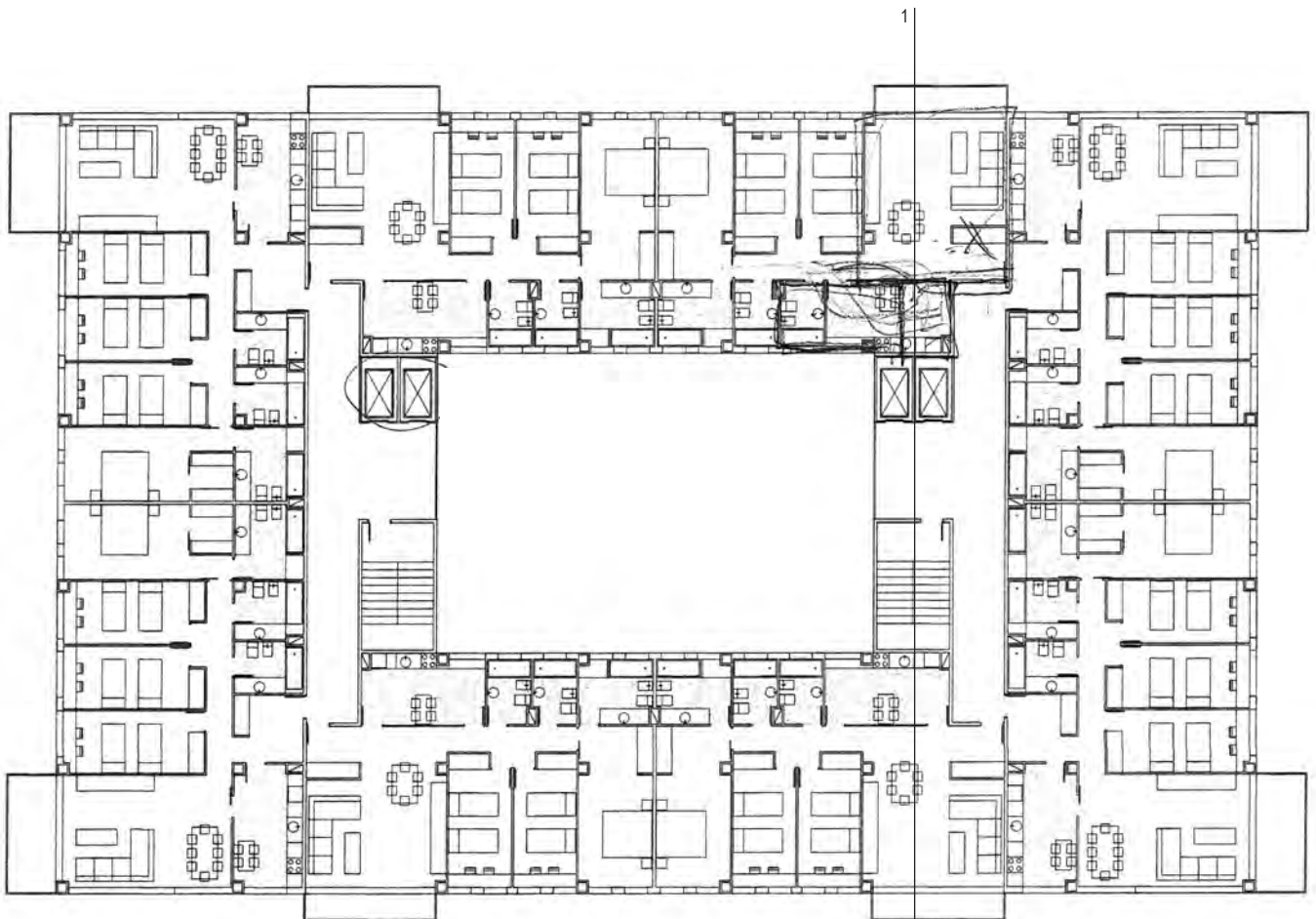
sección 1  
section 1



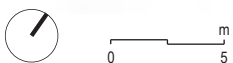
alzado sur  
south elevation

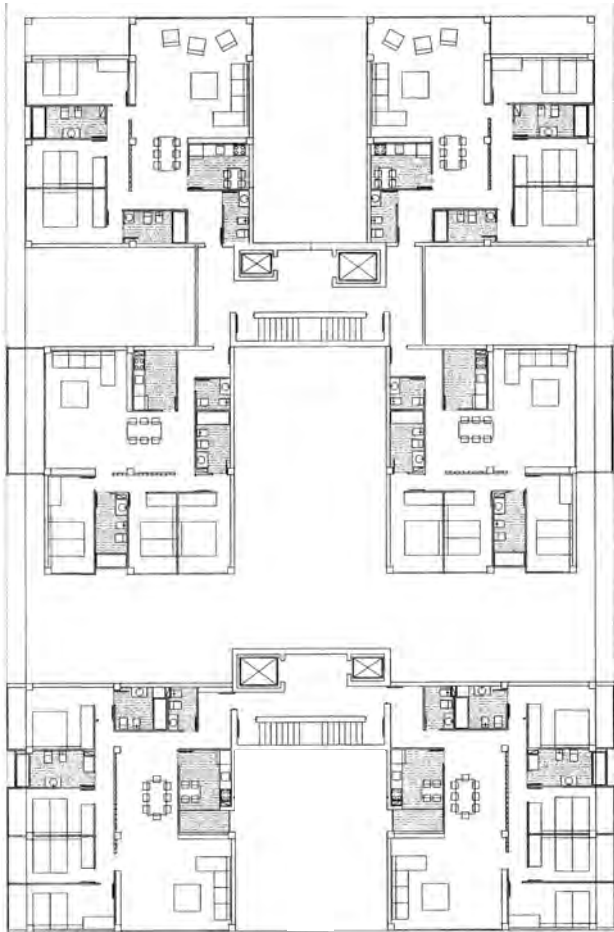


marga doménech

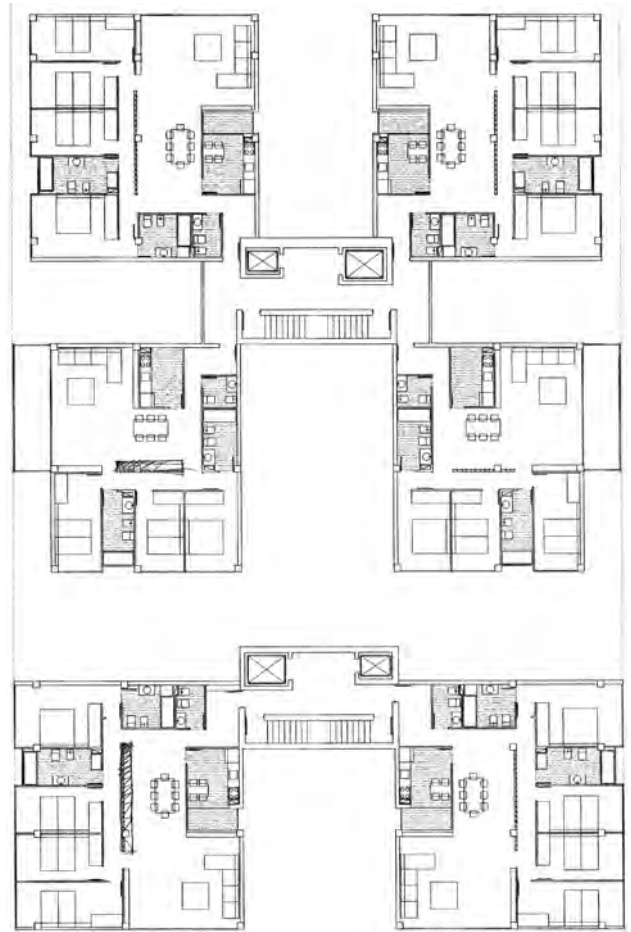


planta tipo  
typical floor





planta tipo 1  
typical floor 1

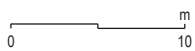


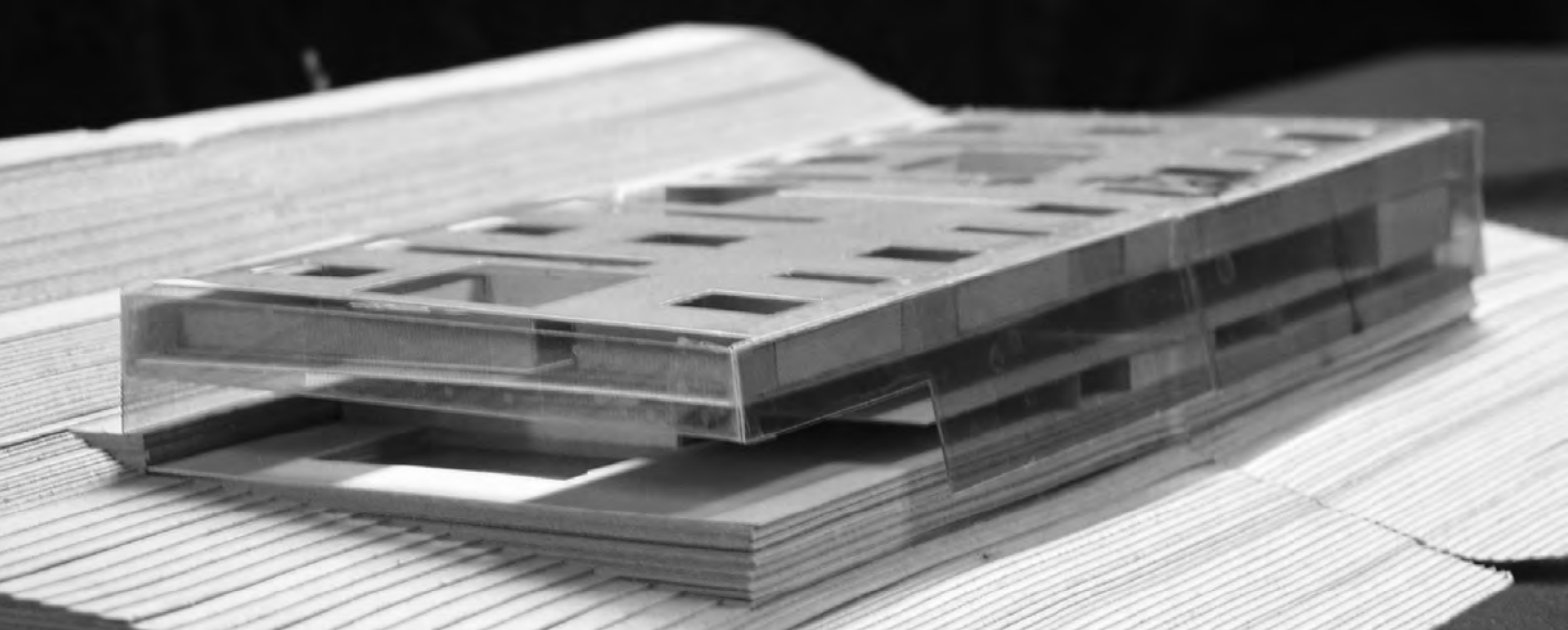
planta tipo 2  
typical floor 2

roberto garcía



alzado noroeste  
northwest elevation

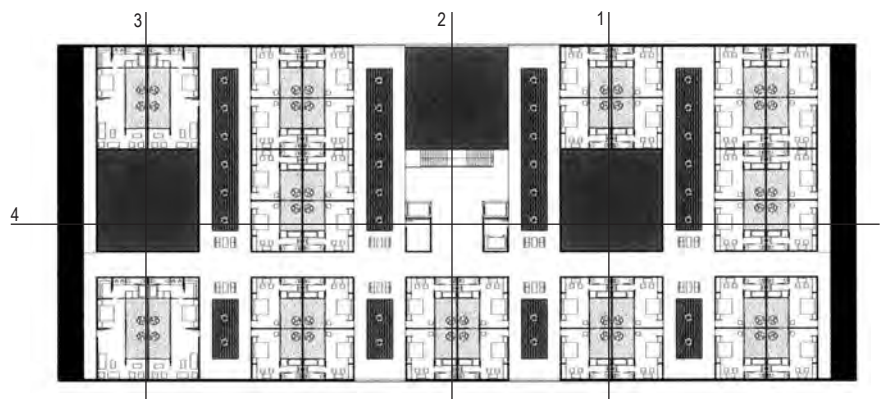




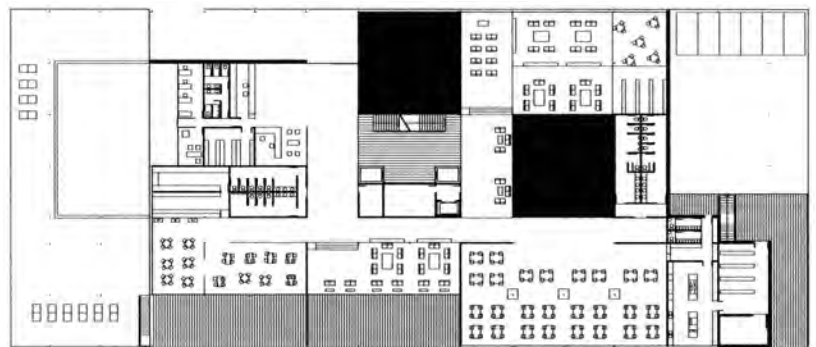
En el extremo oeste del recinto arqueológico de Delfos, junto a la carretera de acceso al nuevo pueblo de Delfos y en una ladera orientada al este hacia el golfo de Corinto, se plantea construir un pequeño hotel de 40 habitaciones destinado a cubrir la oferta de una dotación terciaria que permita la estancia y el reposo del visitante en condiciones de calidad constructiva y sostenibilidad energética que complementen una propuesta cultural de integración dentro de cualquiera de los conjuntos monumentales de la antigua Grecia. Programa: 40 habitaciones dobles (4 de ellas suite con salón), con baño completo; oficios de sucio y limpio en cada planta o cada 15 habitaciones; recepción con oficinas de dirección y administración, maletero y zona de guías; zona de bar-cafetería y restaurante para 100 plazas; zona de salones interiores y espacios al aire libre; zona de biblioteca y área de reposo; zona deportiva con gimnasio, piscina y área de atención médica; zona de acceso con descarga de autobuses; almacenes, instalaciones y aparcamiento de servicio para 10 vehículos; viviendas de servicio.

## hotel en delfos hotel in delfos

The site is at the west end of the archaeological premise of Delfos, beside the road leading to the new town and on a slope facing east, toward the gulf of Corinth. Design a small, 40-room hotel to help cover the demand for lodgings in a place frequented by visitors, but in such a way that building quality and energy sustainability complement a cultural project involving blending into the monumental complexes of ancient Greece. Program: 40 double rooms with bath (4 of them suites with a living room); linen and other service rooms, one per floor or for every 15 rooms; reception area with management and administration offices, a baggage room, and a zone for tour guides; bar-cafeteria area and restaurant (100 places); interior assembly-room and outdoor spaces; library area and resting area; sportive area with gym, swimming pool and first aid zone; access floor with unloading area; department store, installations facilities and parking area; trademan's housing.



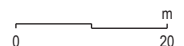
planta superior  
upper floor

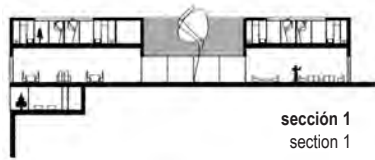


planta baja  
ground floor

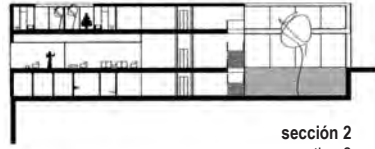


planta inferior  
lower floor

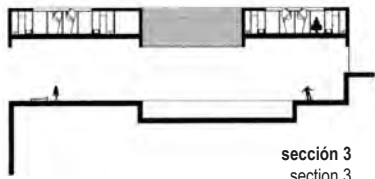




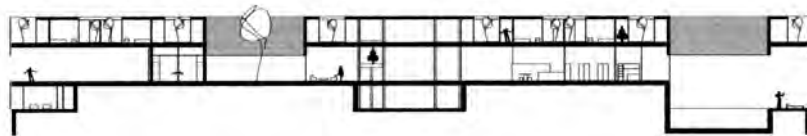
sección 1  
section 1



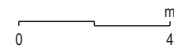
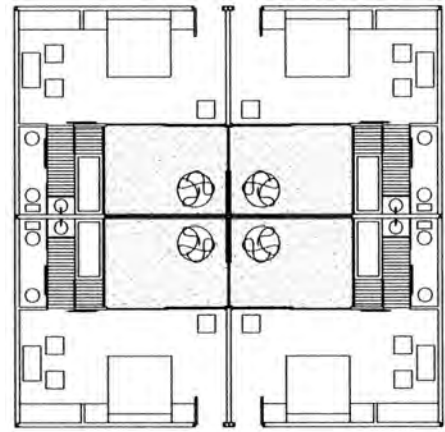
sección 2  
section 2



sección 3  
section 3

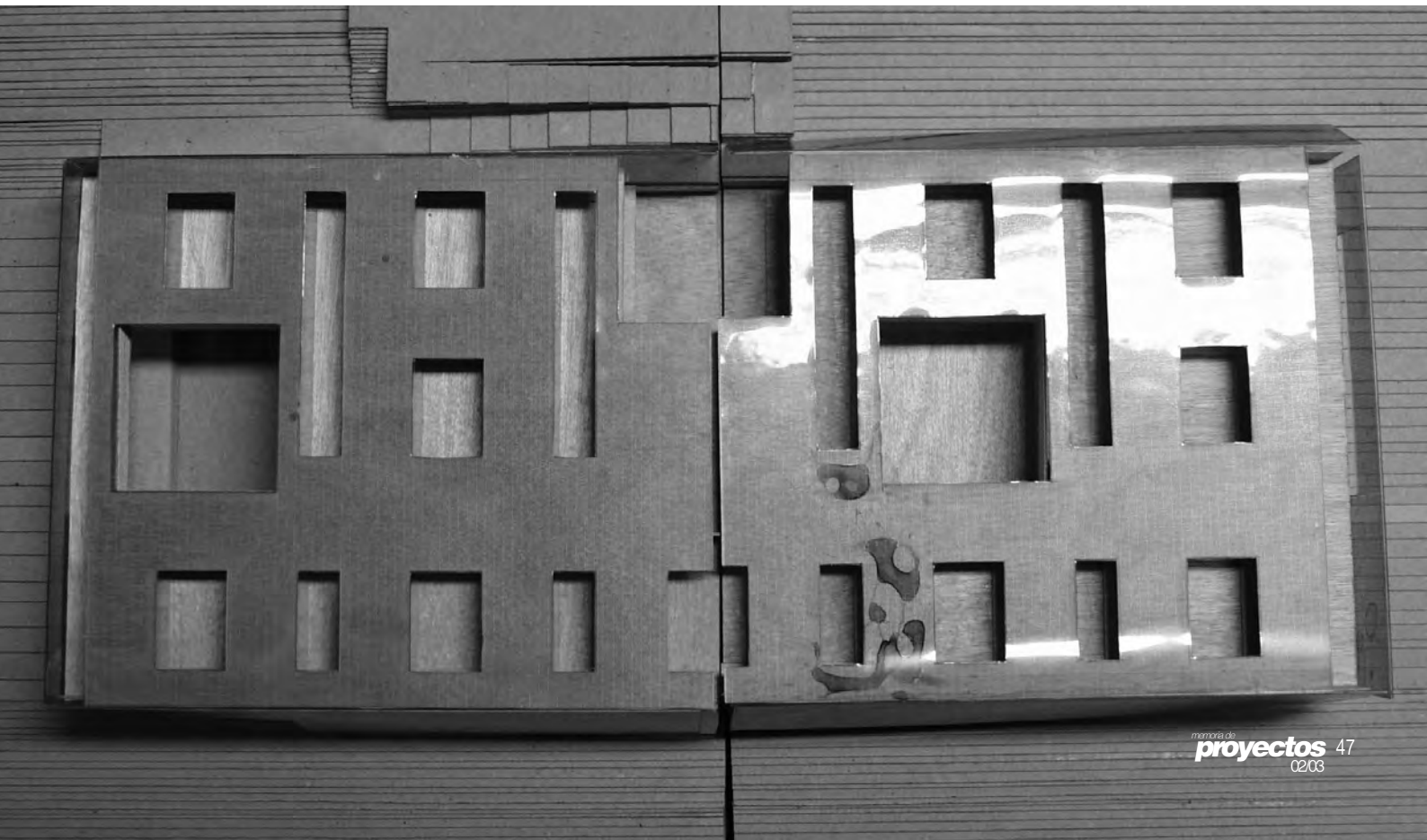


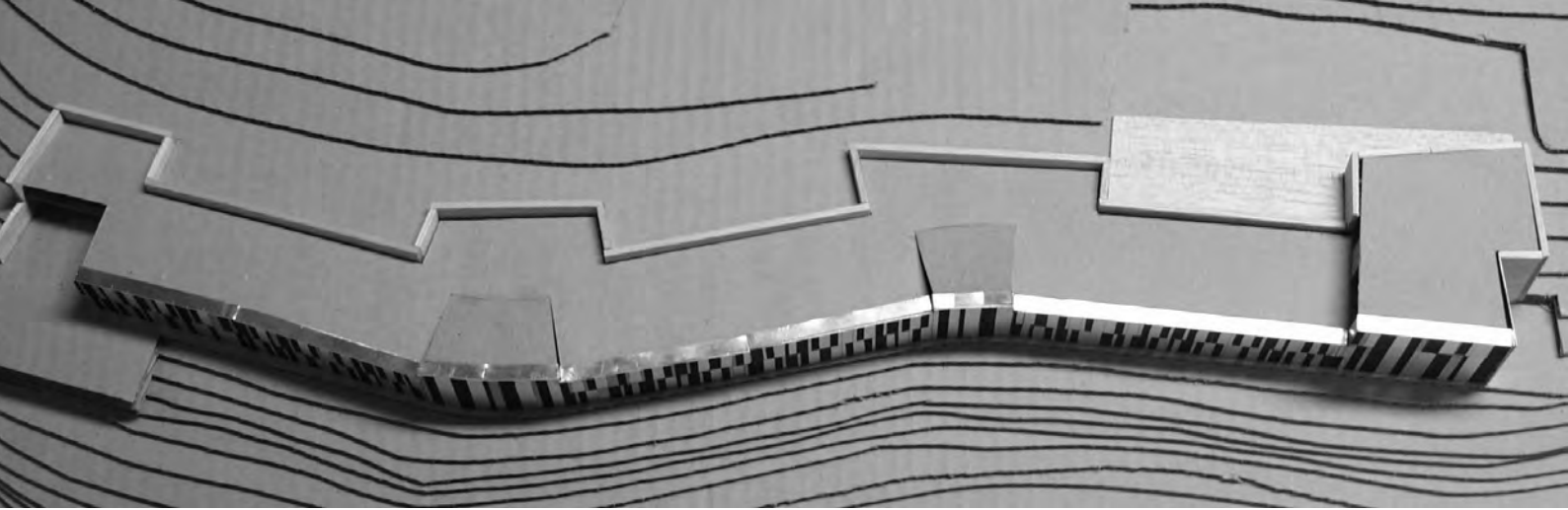
sección 4  
section 4



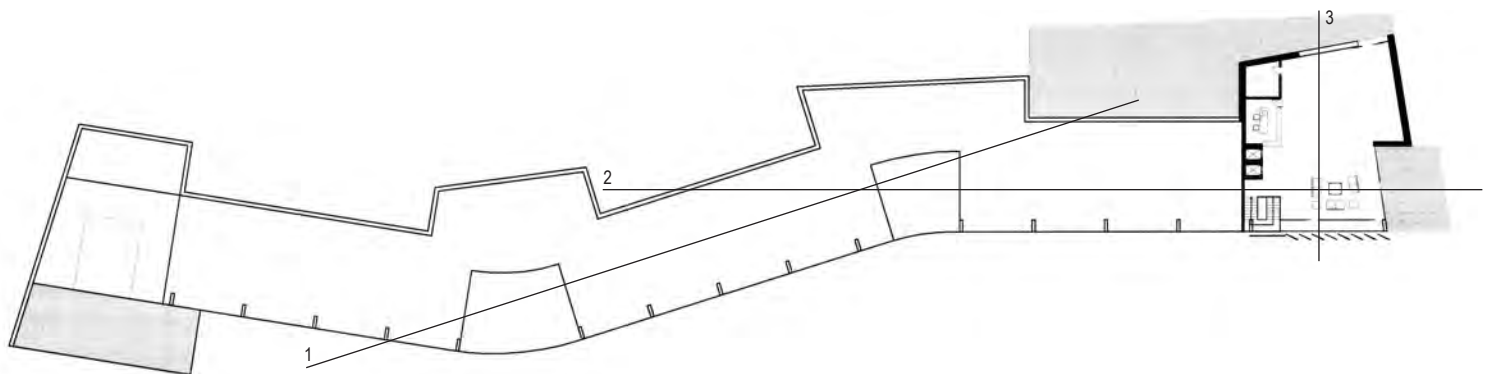
detalle habitaciones  
rooms detail

borja fernández concepción garcía amaia los arcos miren pradera antón uncilla

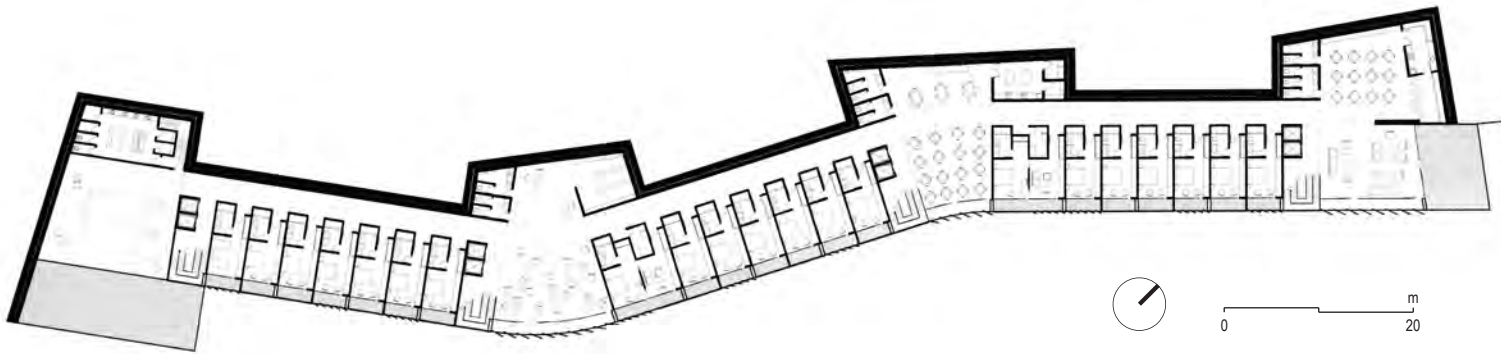




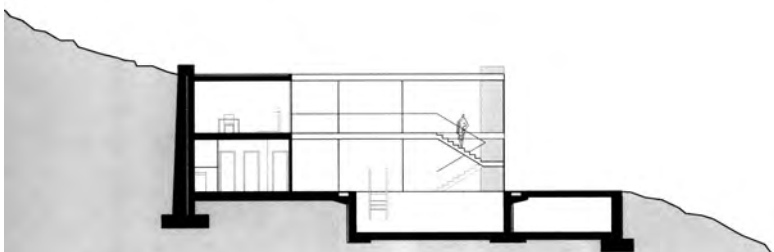
alzado  
elevation



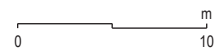
planta acceso  
access floor



planta primera  
first floor



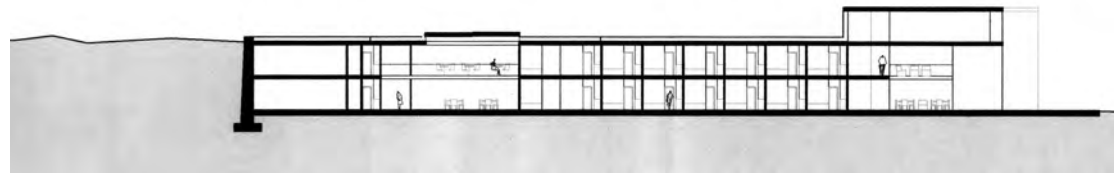
sección 3  
section 3





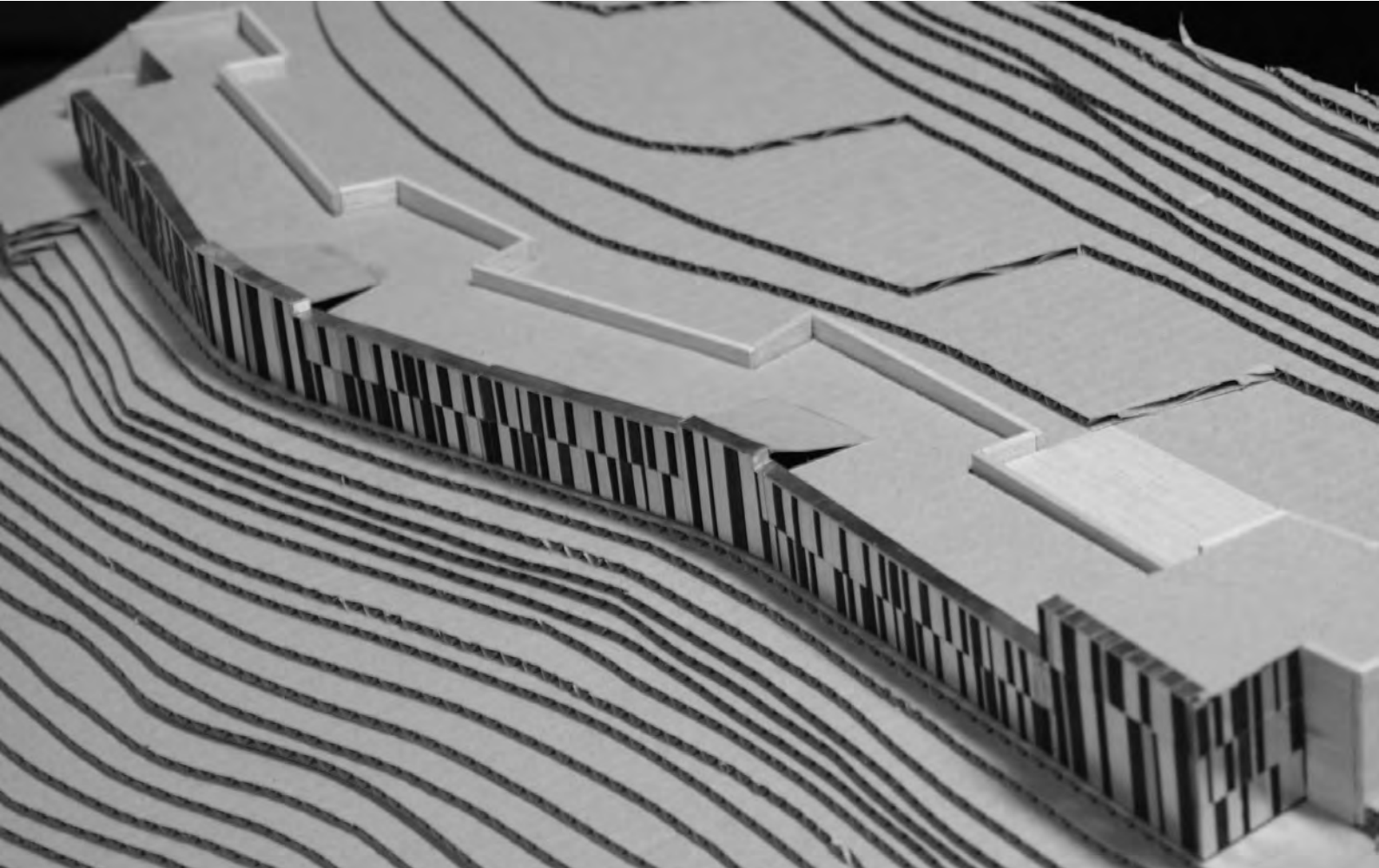


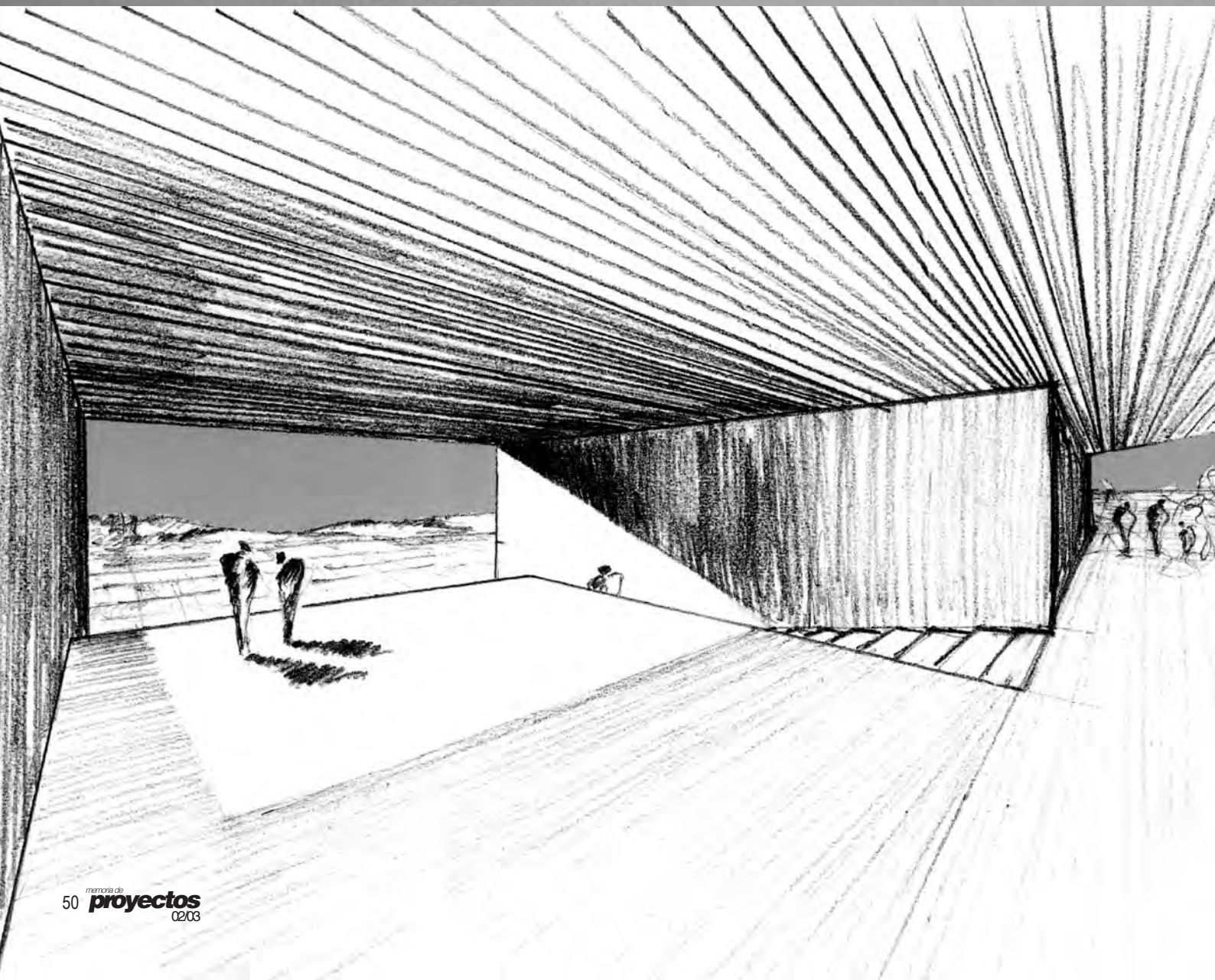
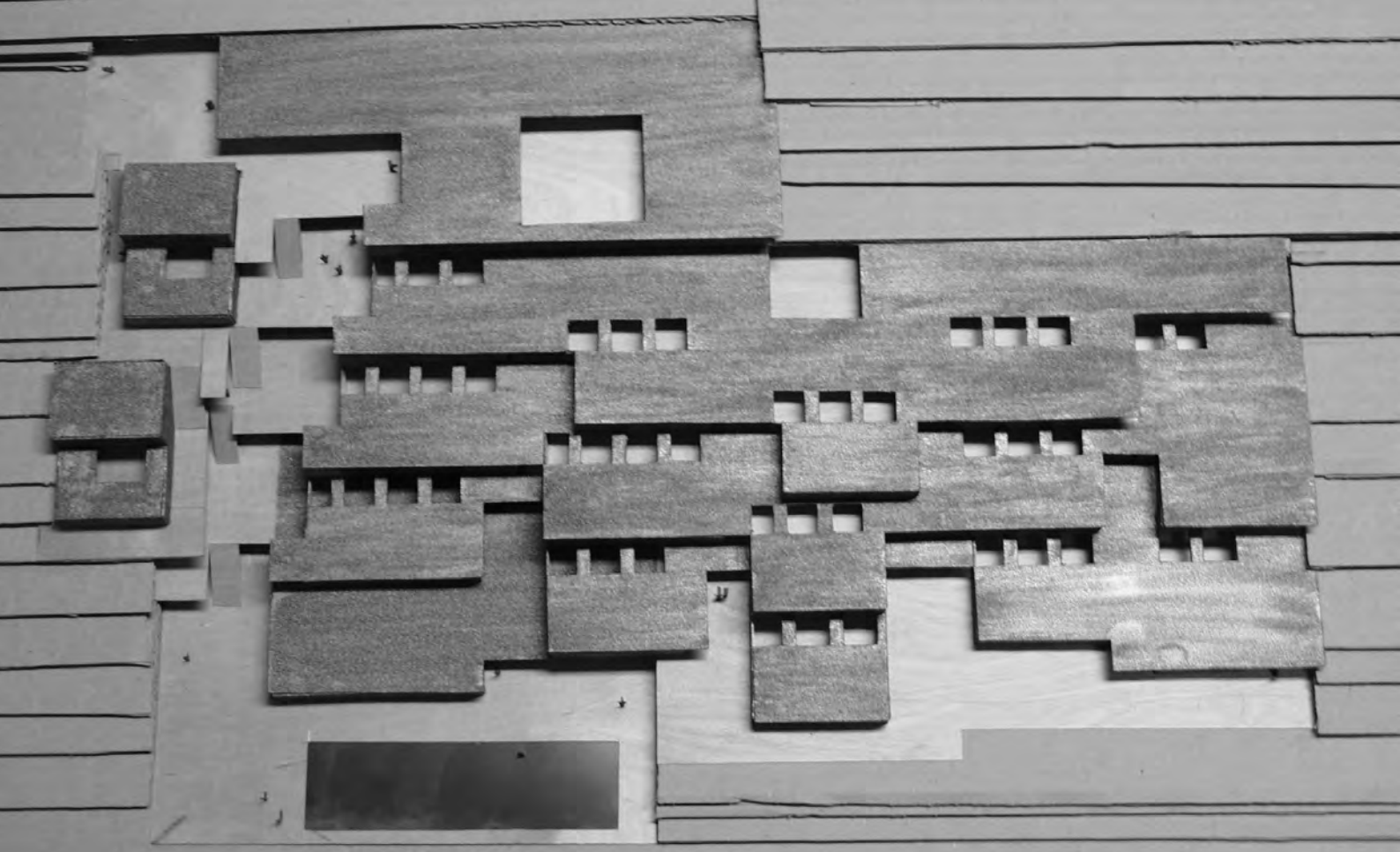
sección 1  
section 1



sección 2  
section 2

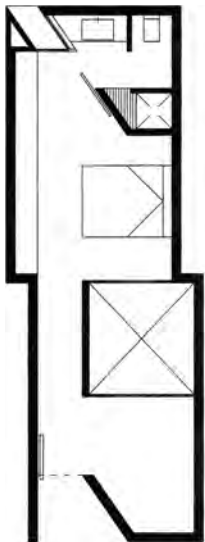
iranzu balerdi   mónica chávvarri   jon martínez   abel mayor   marta paternain   david resano



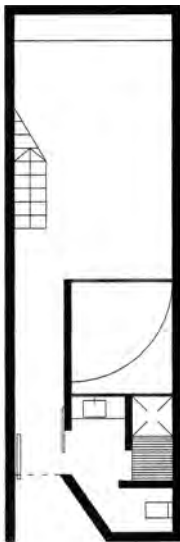




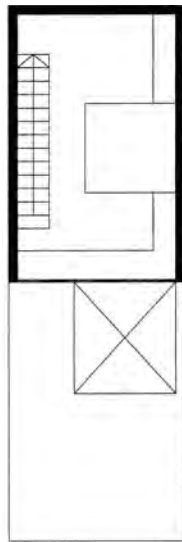
raquel blanco cristina campos carmen fernández sergio murillo carla segovia



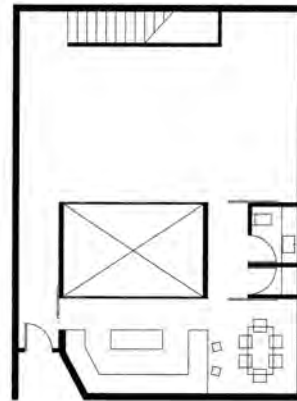
planta tipo habitación  
room typical floor



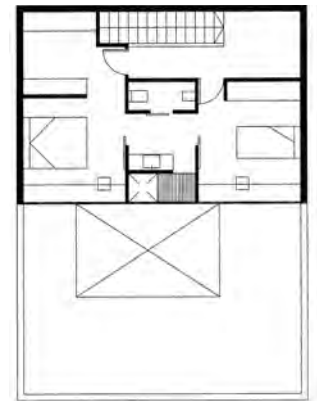
planta baja suite  
suite ground floor



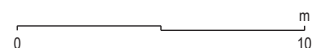
planta primera suite  
suite first floor

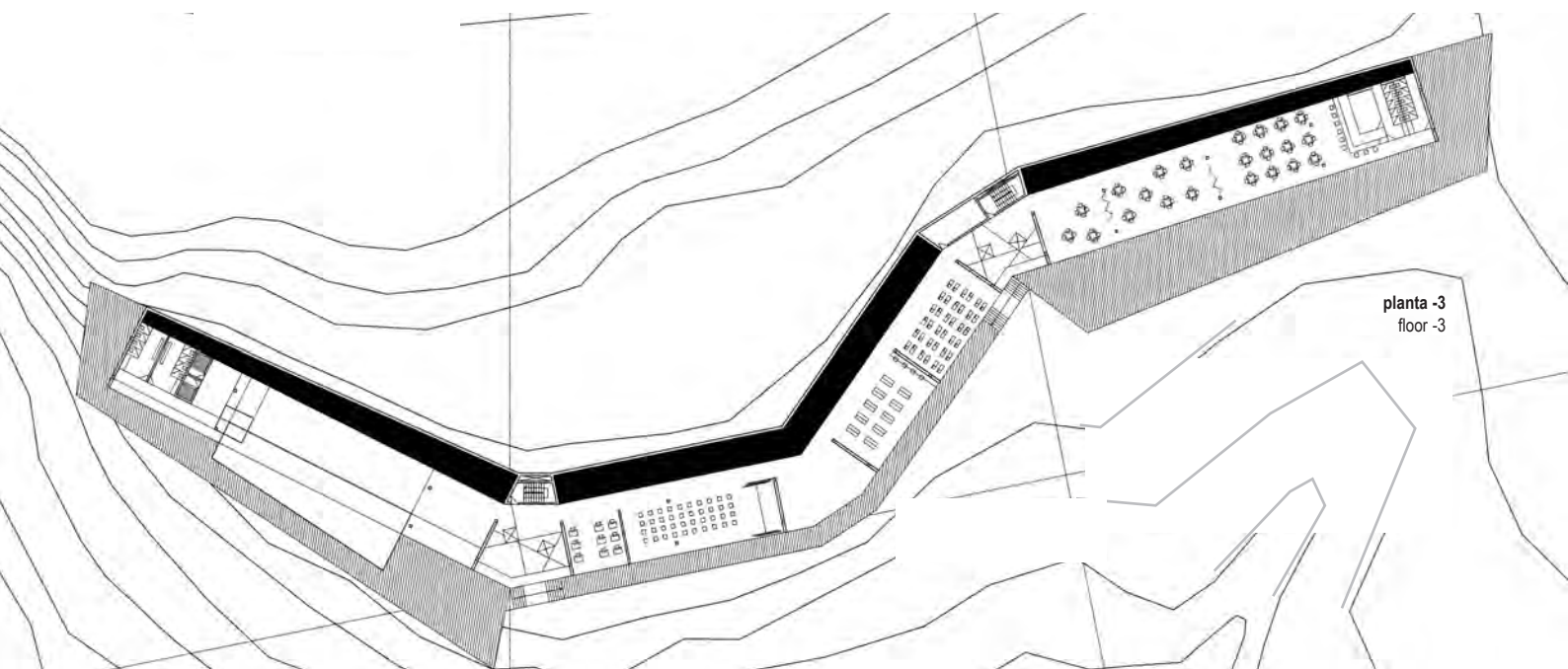
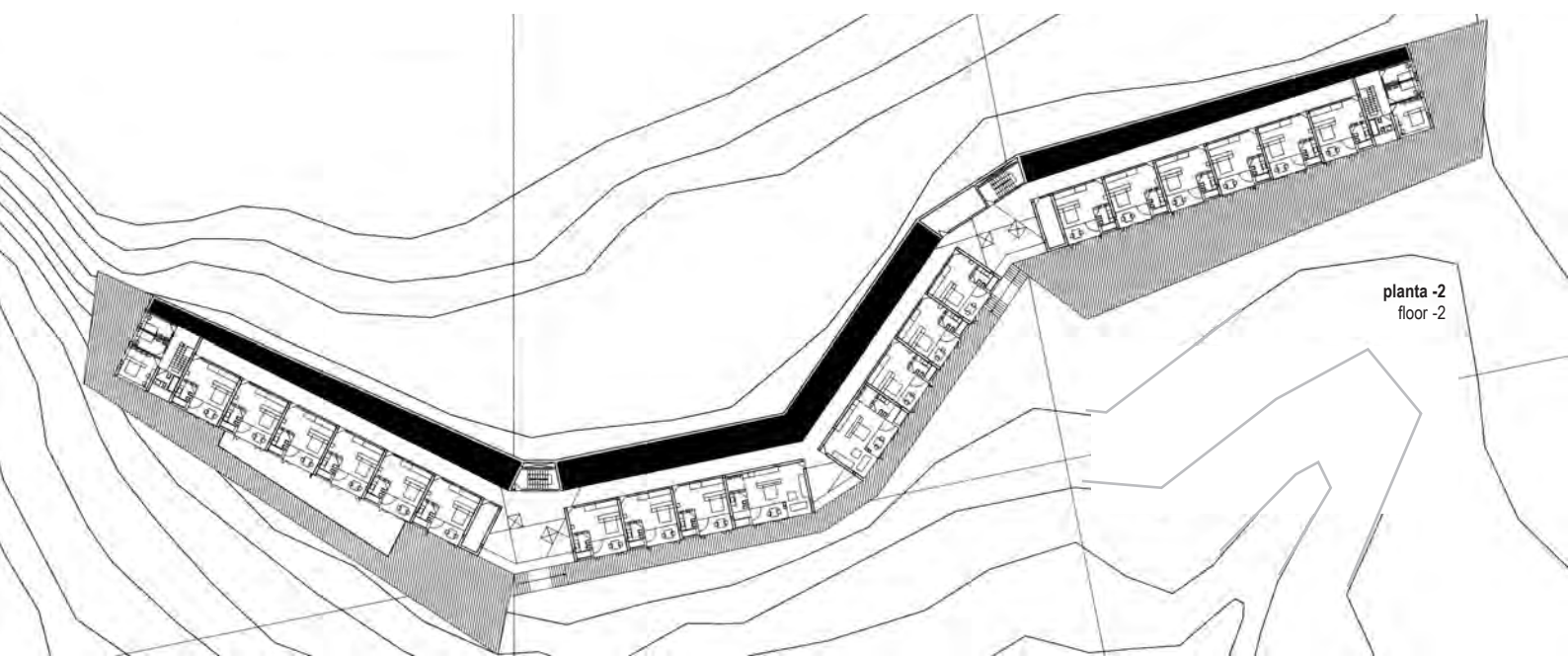


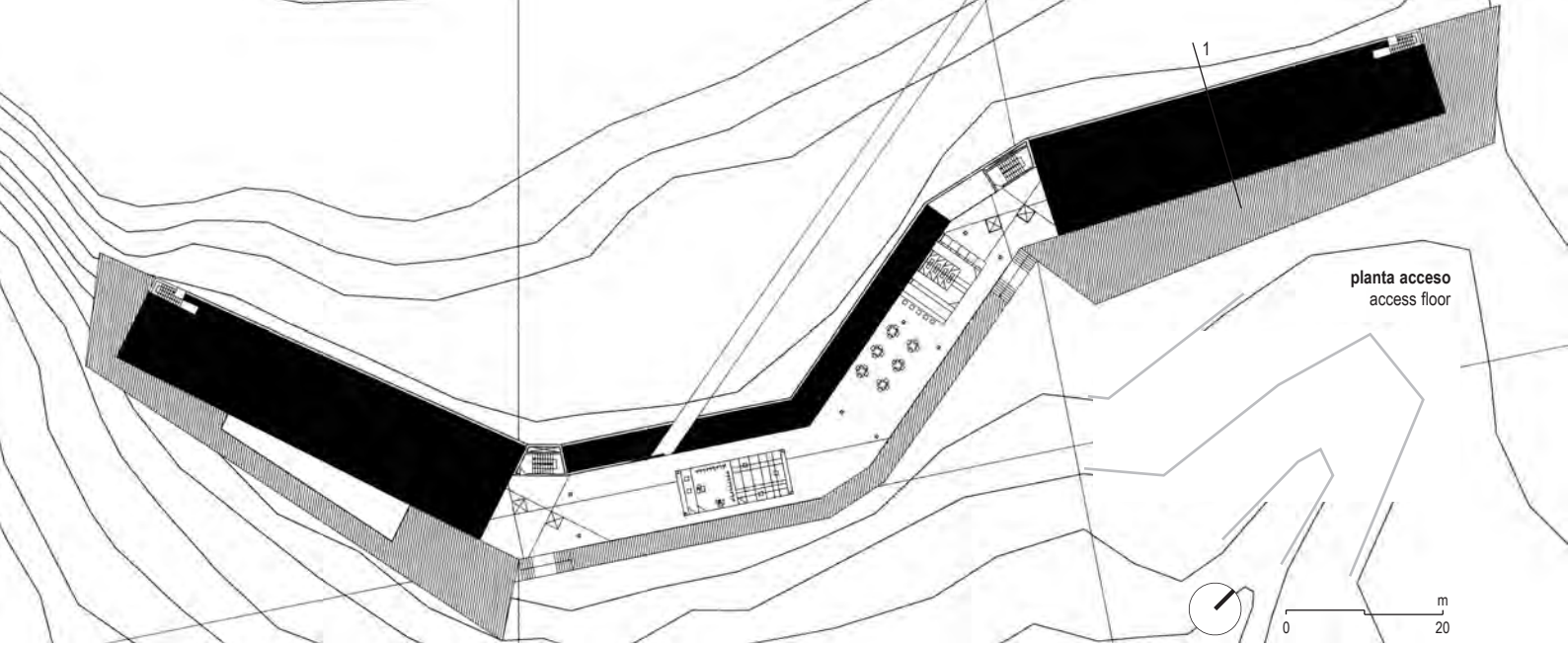
planta baja viviendas de empleados  
employer's dwellings ground floor



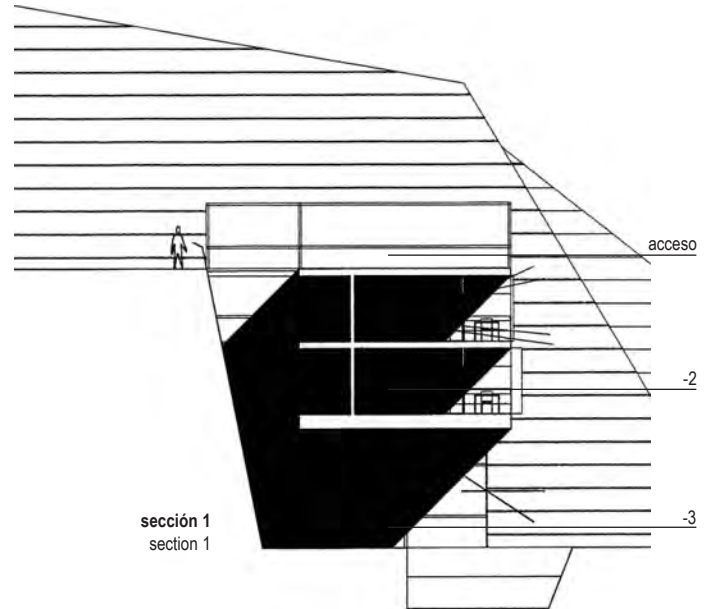
planta primera viviendas de empleados  
employer's dwellings first floor



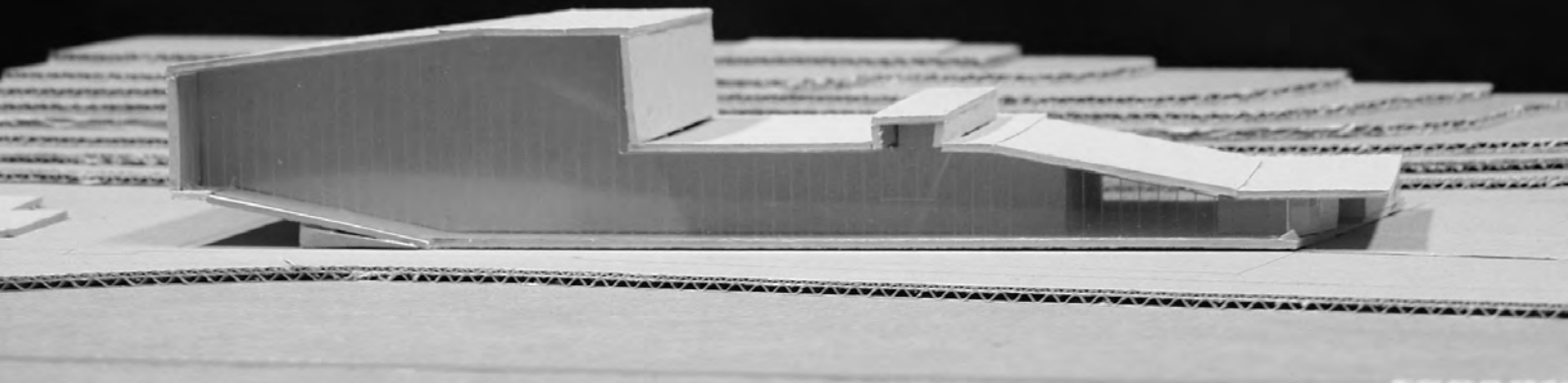




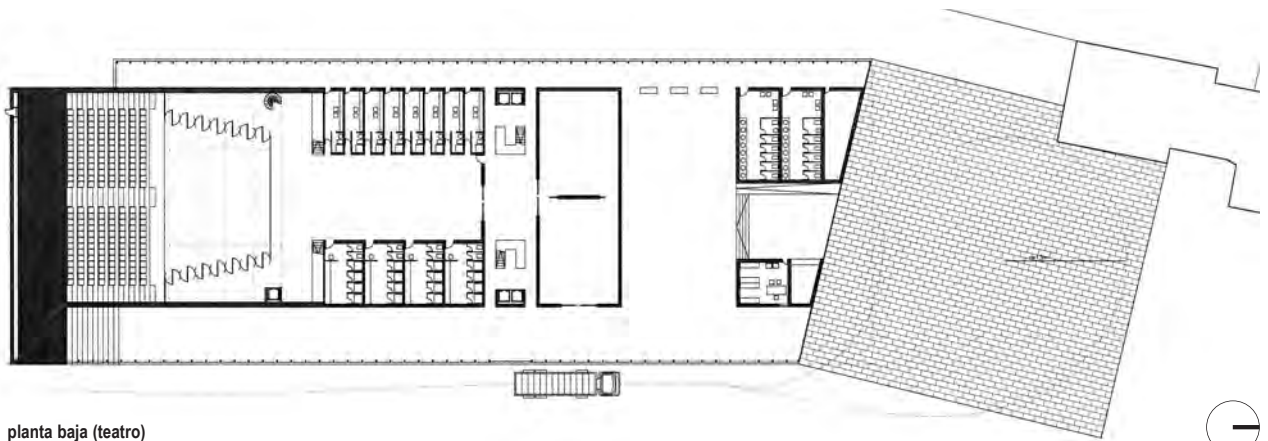
josé maría aizcorbe emma alonso antonio benjumea julio gómez eduardo laborda diego rodríguez



espacio escénico en san sebastián  
scenic place in san sebastian



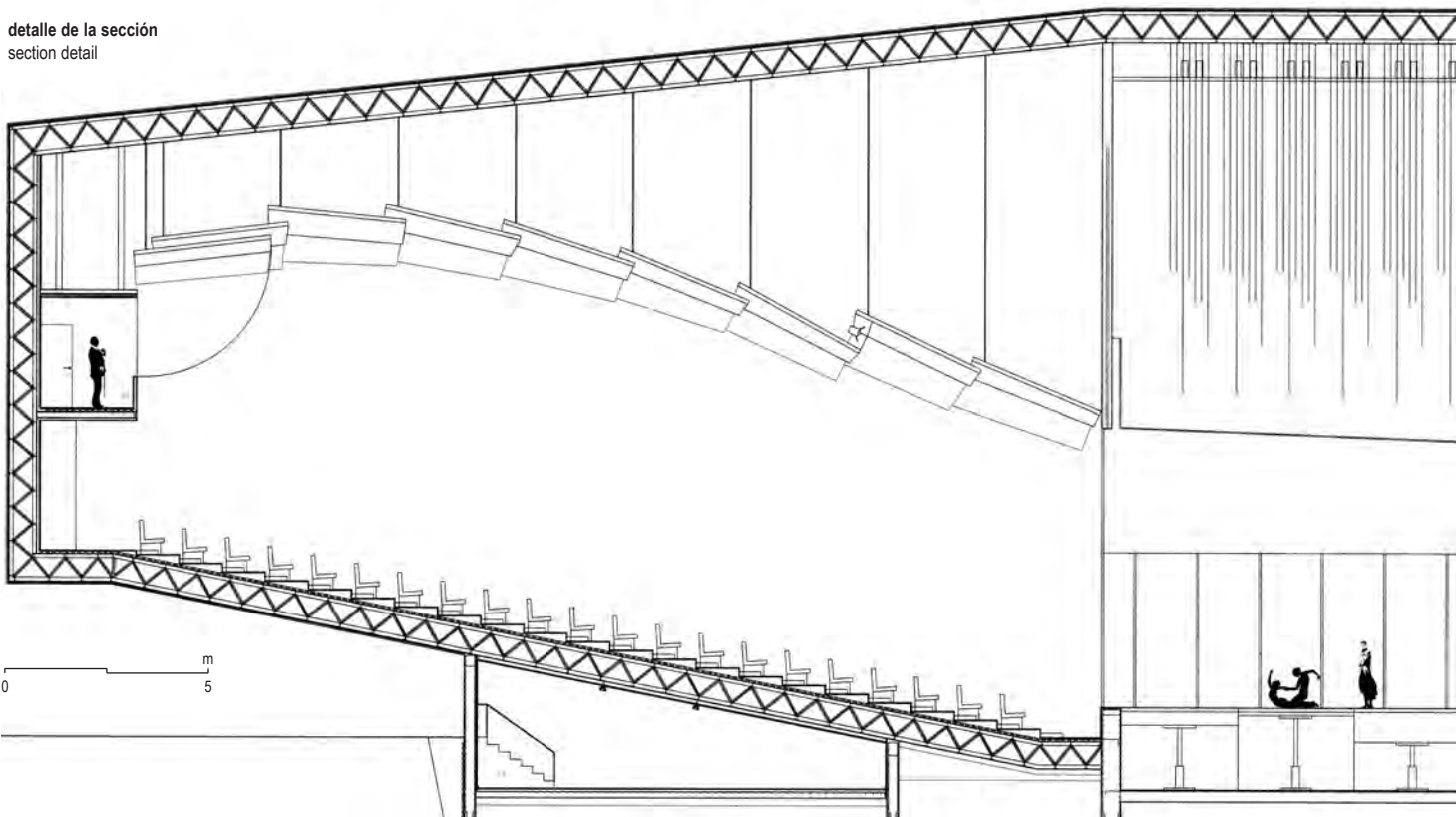
ana lidia gonzález



planta baja (teatro)  
ground floor (theatre)

0 20 m

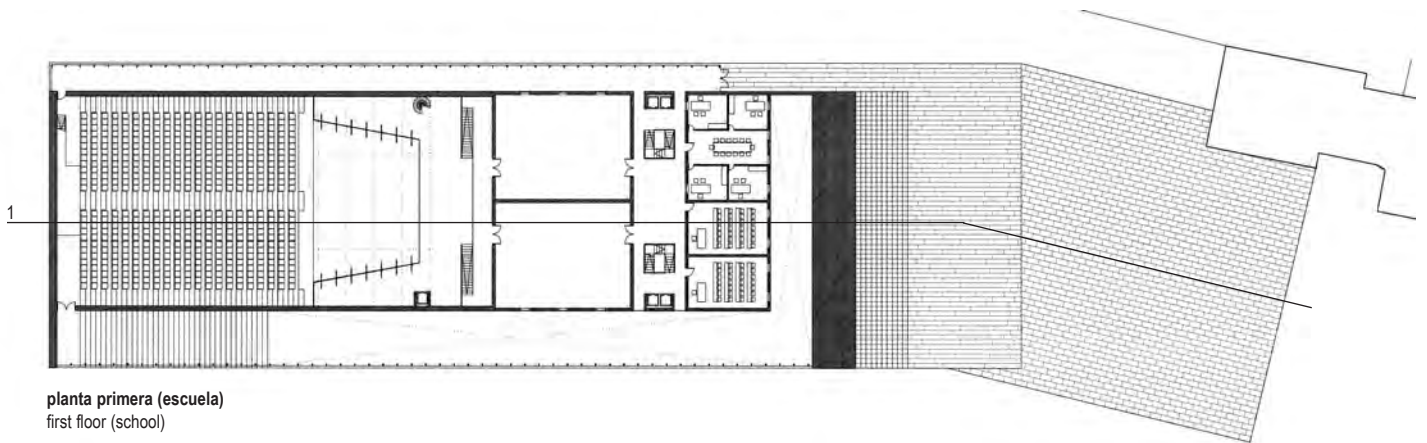
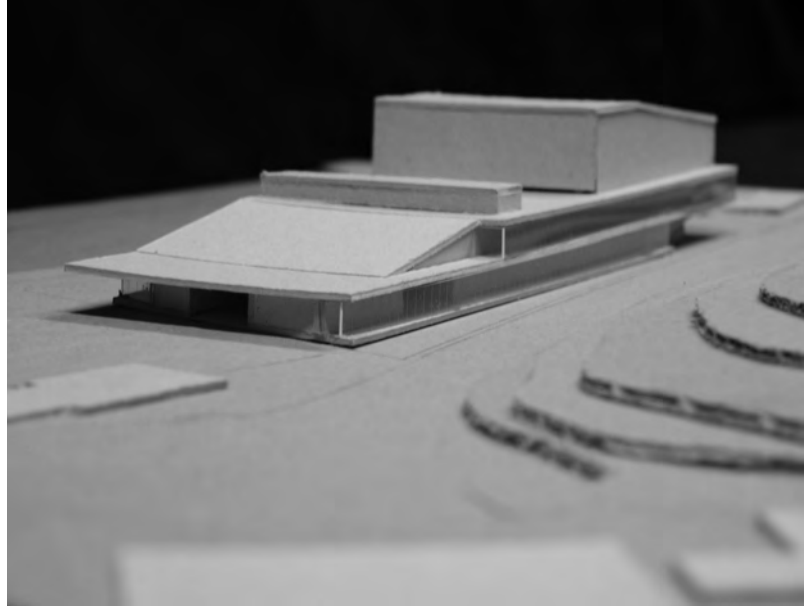
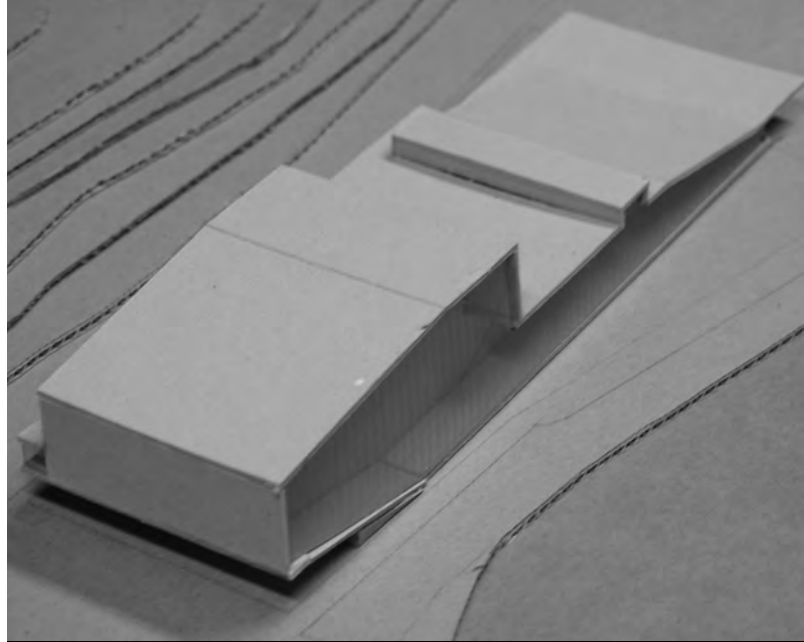
detalle de la sección  
section detail



0 5 m

En un solar situado a los pies del Monte Igueldo, sobre las pistas del antiguo Club de Tenis y con vistas a la bahía de la Concha, se desea construir un edificio multiuso destinado a enmarcar la actividad docente e interpretativa de dos artes escénicas ligadas históricamente entre sí: el teatro y la danza. El edificio tendrá el carácter de una dotación pública, basada en la existencia de un espacio escénico de uso variable, con el siguiente programa: acceso principal; control de entrada/taquilla; vestíbulo-foyer; espacio principal para 500 plazas; escenario mínimo de 250 m<sup>2</sup> con dimensiones mínimas de 15 m x 7 m (embocadura) y 12 m (fondo); 4 vestuarios para artistas /alumnos (4 x 30 m<sup>2</sup>); 8 camerinos para invitados/profesores (8 x 10 m<sup>2</sup>); acceso de servicio para camiones; almacenes generales (2 x 100 m<sup>2</sup>); taller de montaje (1 x 100 m<sup>2</sup>); 2 salas de ensayo (2 x 150 m<sup>2</sup>); 2 aulas seminario (2 x 50 m<sup>2</sup>); 4 despachos de dirección (4 x 15 m<sup>2</sup>); 1 sala de reuniones (1 x 30 m<sup>2</sup>); 1 sala de administración con archivo (30 m<sup>2</sup>); aseos para público y dirección, y cuartos de limpieza. El edificio aprovecha la dotación de bar-restaurante existente en el solar.

The site is a lot at the foot of Mount Igueldo, on the courts of the old Tennis Club, with views of the Concha bay. Design a multiuse building that will accommodate the educational and performance activities of two historically linked stage arts: theater and dance. The building will have a public character, one based on the presence of a flexible performance space. Program: main access; entry control/booking office; foyer; main space (500 places); stage: min. 250 m<sup>2</sup>; min. dimensions 15 m x 7 m (front) and 12 m (rear); 4 changing room for the artists/students (4 x 30 m<sup>2</sup>); 8 changing rooms for guests/professors (8 x 10 m<sup>2</sup>); access for trailers; general store (2 x 100 m<sup>2</sup>); garage (1 x 100 m<sup>2</sup>); 2 rehearsal halls (2 x 150 m<sup>2</sup>); 2 seminar rooms (2 x 50 m<sup>2</sup>); 4 management office (4 x 15 m<sup>2</sup>); 1 meeting room (1 x 30 m<sup>2</sup>); 1 administration with archive (30 m<sup>2</sup>); toilet and cleaning room. The building incorporates the site's existing bar-restaurant.

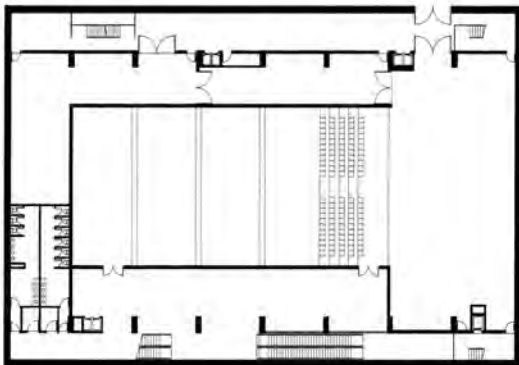
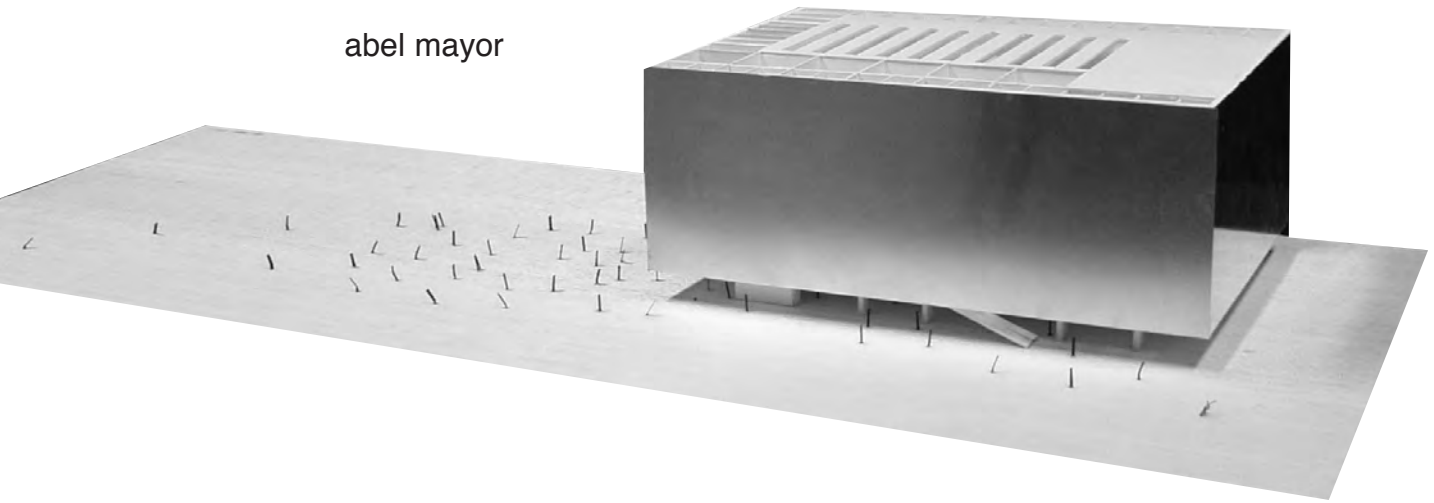


planta primera (escuela)  
first floor (school)

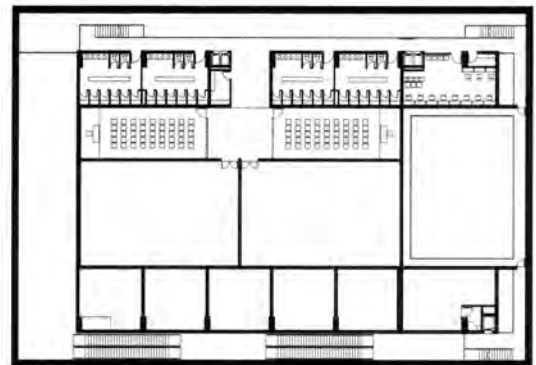


sección 1  
section 1

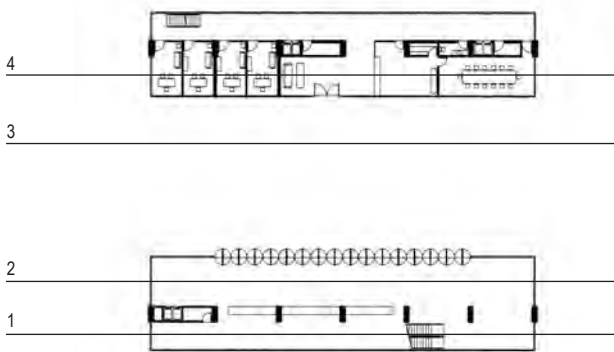
abel mayor



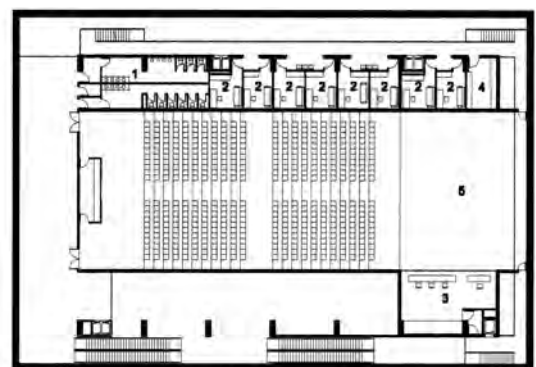
planta 2  
floor 2



planta 3  
floor 3

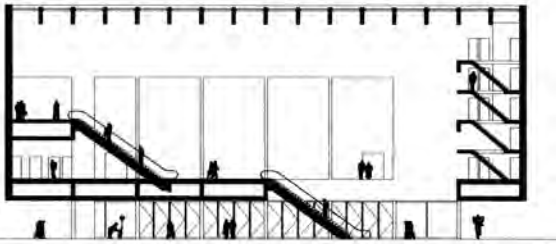


planta acceso  
access floor

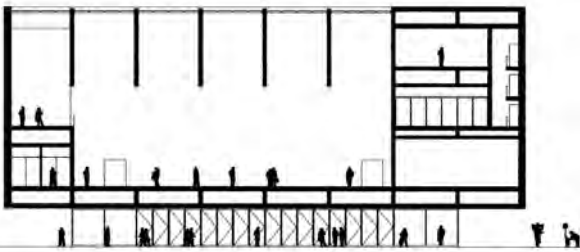


planta 1  
floor 1

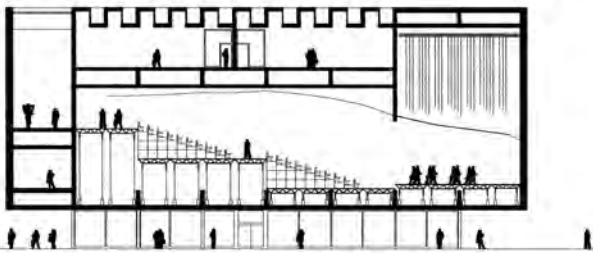




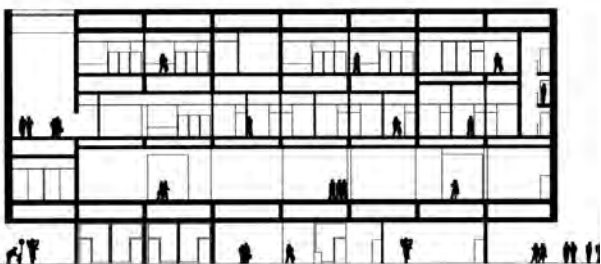
sección 1  
sección 1



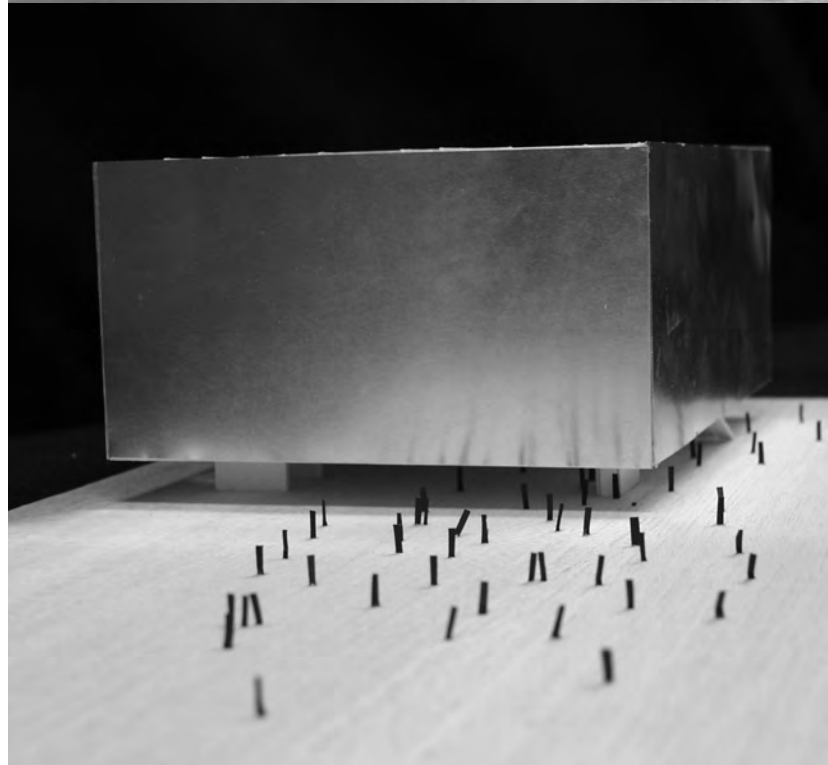
sección 2  
sección 2



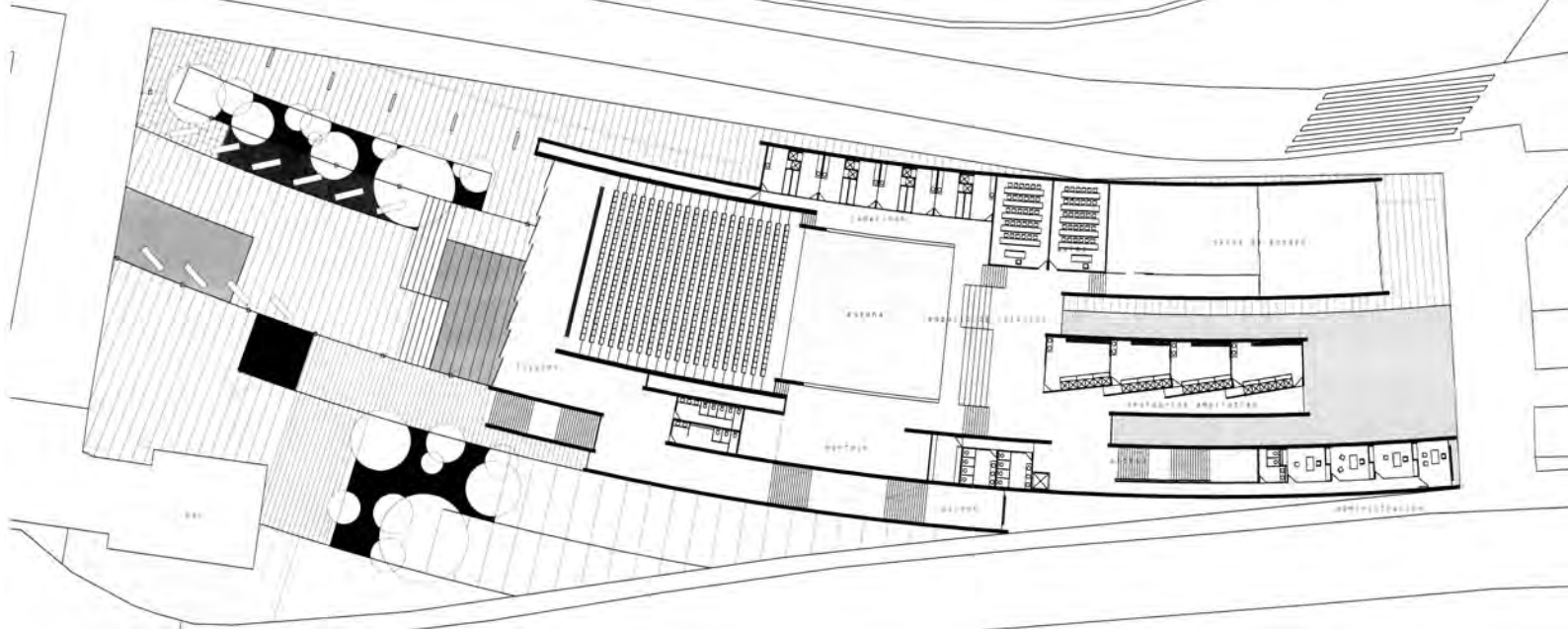
sección 3  
sección 3



sección 4  
sección 4







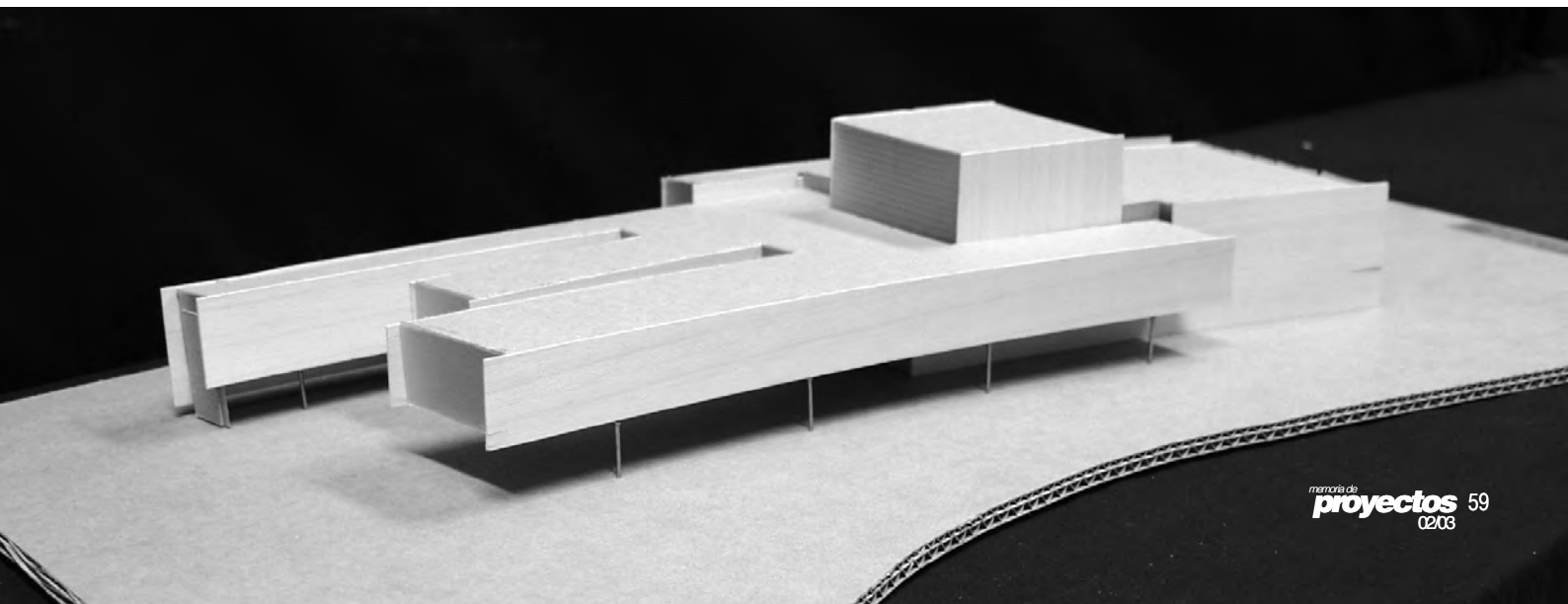
planta primera  
first floor



alzado este  
east elevation



sección 2  
section 2



# edificio de oficinas en pamplona

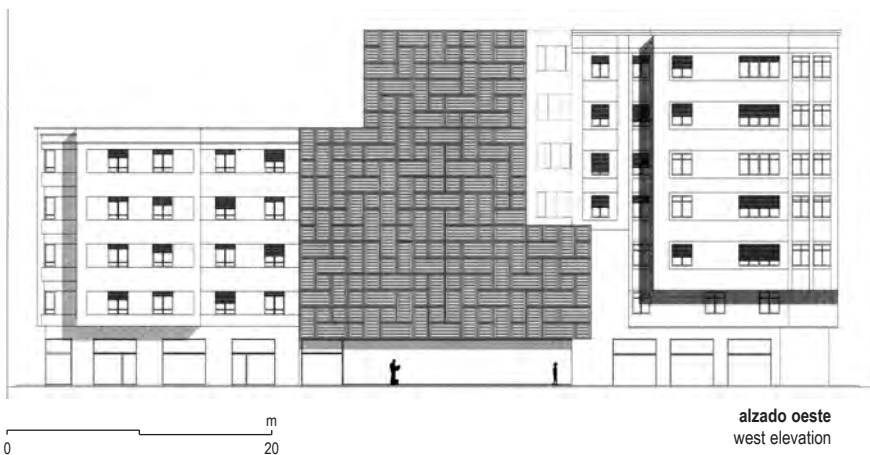
## offices building in pamplona

Se propone la construcción de un edificio de oficinas con planta baja comercial en un solar del Segundo Ensanche de Pamplona, en la manzana delimitada por las calles Sancho el Mayor, Tudela, Estella y García Ximénez. La parcela es la que ocupa el viejo cine Alcázar, edificio en desuso cuya demolición contempla el ejercicio. Con una planta sensiblemente trapezoidal, dos de sus lados comparten medianería con edificios de viviendas de baja+VI y baja+IV alturas, y los otros dos presentan fachadas a las calles Sancho el Mayor y Tudela. El edificio que se propone tendrá una altura máxima de B+VIII. Se debe considerar además que el más alto de los dos tiene huecos en toda su fachada a partir de la planta tercera lo que obligará a un retranqueo mínimo de 3 m. La edificabilidad sobre rasante es de 2.700 m<sup>2</sup> construidos totales, con un mínimo de 350 m<sup>2</sup> de superficie comercial en planta baja y acceso con portería. La planta de sótano queda reservada para archivos de oficinas cuya dimensión será igual al 20% de la superficie del uso al que sirven. La estructura general del edificio deberá plantearse de un modo flexible, de manera que la modulación global permita asumir la actual situación de mercado cambiante. Las plantas de oficinas podrán ser compartimentadas en módulos independientes de hasta un mínimo de 40 m<sup>2</sup>. El interés de estos locales está garantizado por la inminente implantación de unos grandes almacenes de gran envergadura en el solar de Intendencia.

The idea is to erect an office building, with stores at ground level, on a lot of Pamplona's second enlargement, on the city block delimited by the streets Sancho el Mayor, Tudela, Estella, and García Ximénez. The lot is currently occupied by the old Alcázar moviehouse. This building has fallen into disuse and the project proposes its demolition. A trapezoid on plan, two of its sides share party wall with apartment buildings rising six and four levels above the ground floor, respectively. The other two sides face the streets Sancho el Mayor and Tudela. The proposed office building will, at most, rise eight stories above the ground floor. Consider, too, that the taller of the two neighboring buildings has openings throughout its façade starting with the third floor, calling for a setback of at least 3 m. Above ground, the total area that can be built on is 2.700 m<sup>2</sup>. This must include at least 350 m<sup>2</sup> of commercial space at ground level. The basement will include filing space which in size will be 20% of the office space it serves. The general structure of the building must be flexible, in such a way that it accommodates changing market situations. The office floors should be divisible into independent modules with an area of at least 40 m<sup>2</sup>. These spaces are sure to be attractive, thanks to the imminent proximity of a major department store on the Intendencia lot.

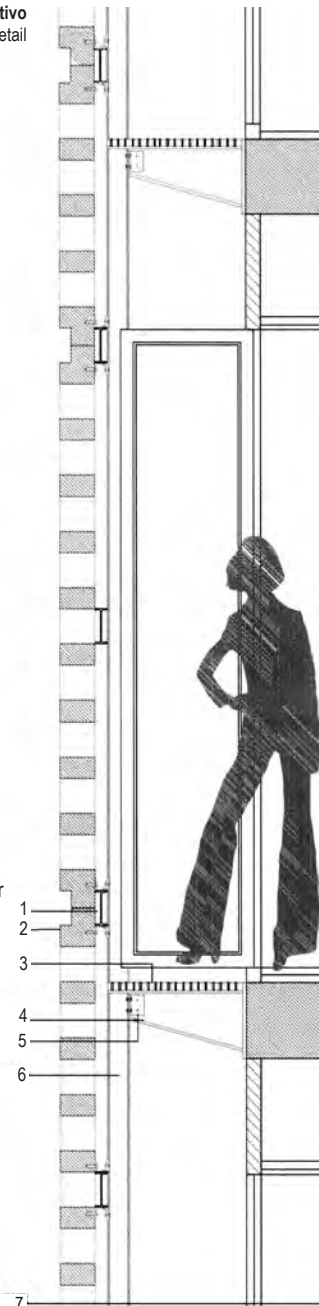
jordi figa

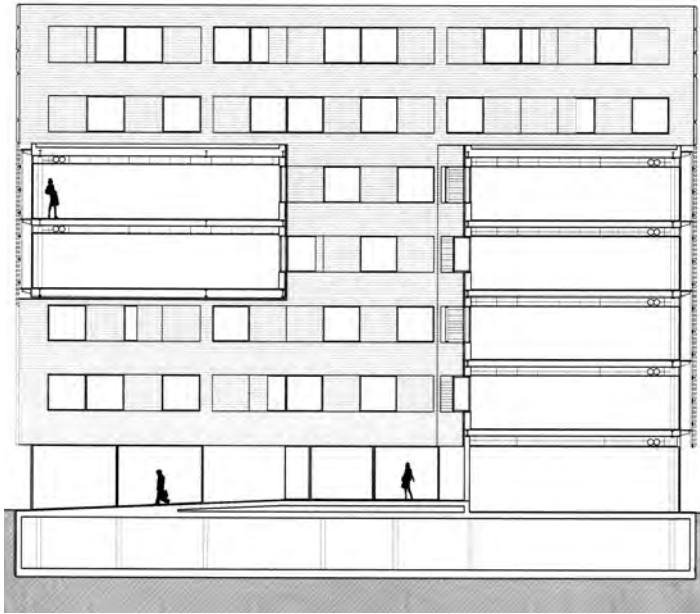
detalle constructivo  
constructive detail



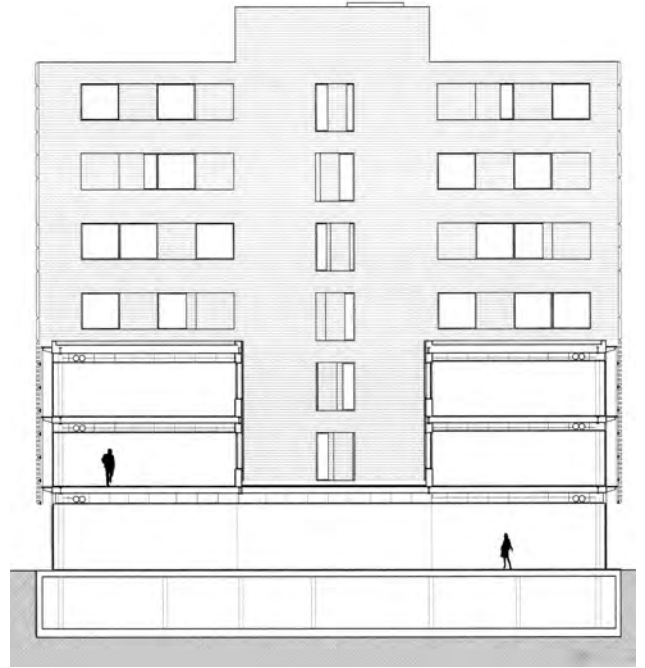
1. Montantes horizontales
2. Parasol formado por una capa de hormigón aligerado
3. Pasarela de trámex
4. Ménsula
5. Perfil L
6. Montante vertical
7. HEBs recubiertos con pladur

1. Horizontal mullions
2. Parasol formed by layer of lightened concrete
3. Trámex catwalk
4. Corbel
5. L profile
6. Vertical mullion
7. Pladur-clad HEBs





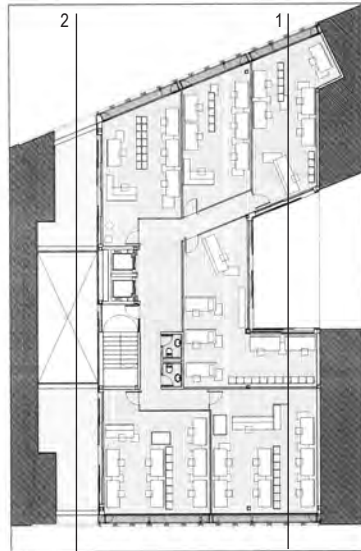
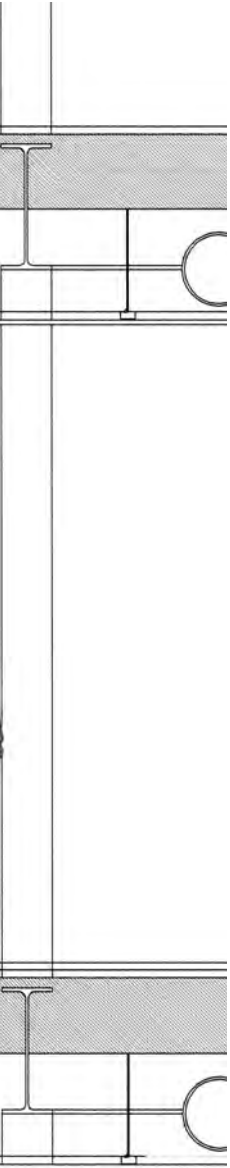
sección 1  
section 1



sección 2  
section 2



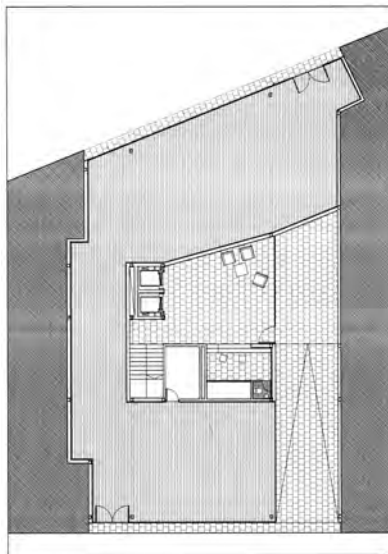
0 ————— m  
10



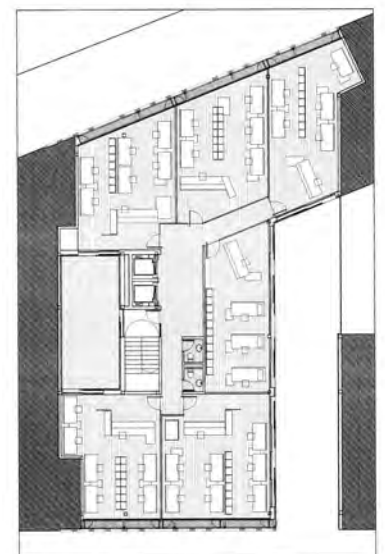
planta 3-4  
floor 3-4



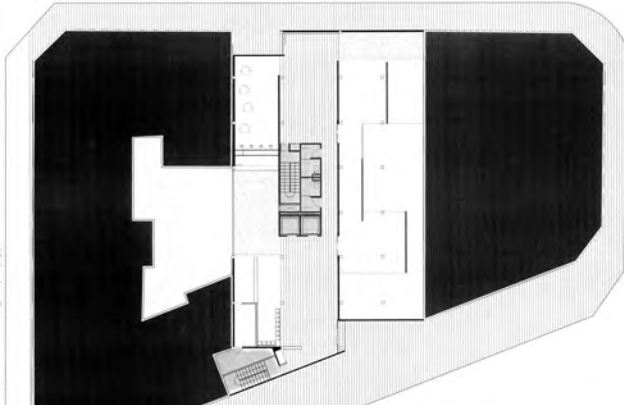
planta 5-6  
floor 5-6



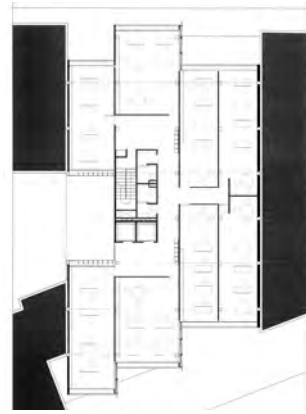
planta acceso  
access floor



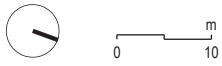
planta 1-2  
floor 1-2



planta de acceso  
access floor



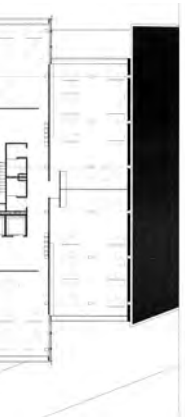
planta 1  
floor 1



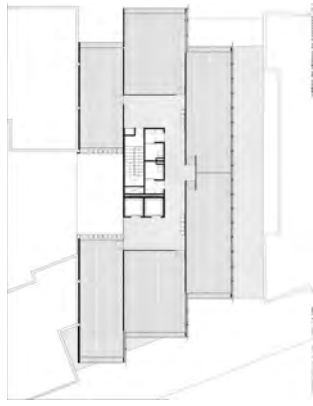
alzado oeste  
west elevation



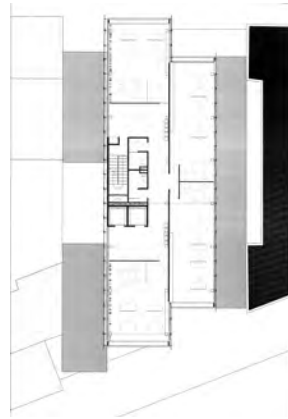
alzado este  
east elevation



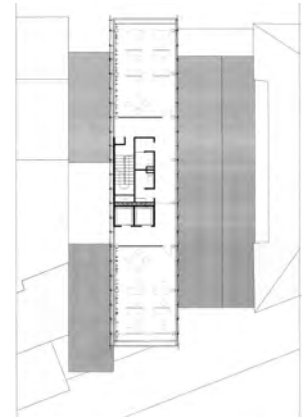
planta 2  
floor 2



planta 3-4-5  
floor 3-4-5

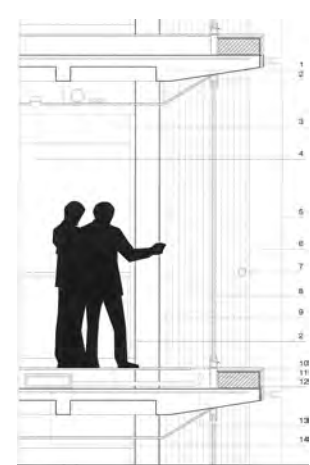


planta 6  
floor 6



planta 7  
floor 7

maría pilar llamas



1. Losa aligerada de hormigón armado e=25 cm
2. Carpintería de chapa
3. Falso techo
4. Luminaria empotrada en falso techo
5. Vidrio translúcido con sujeción metálica a forjados
6. Muro hormigón armado e=15 cm
7. Barandilla metálica de d=9 cm
8. Vidrio doble de seguridad con cámara de aire
9. Pilar HA-25, 25 x 25 cm
10. Panel fenólico clavado
11. Lámina impermeabilizante
12. Relleno taco de madera
13. Rejilla ventilación
14. Conducto de aire acondicionado (acero galvanizado + aislamiento)

1

2

3

4

5

6

7

8

9

2

10

11

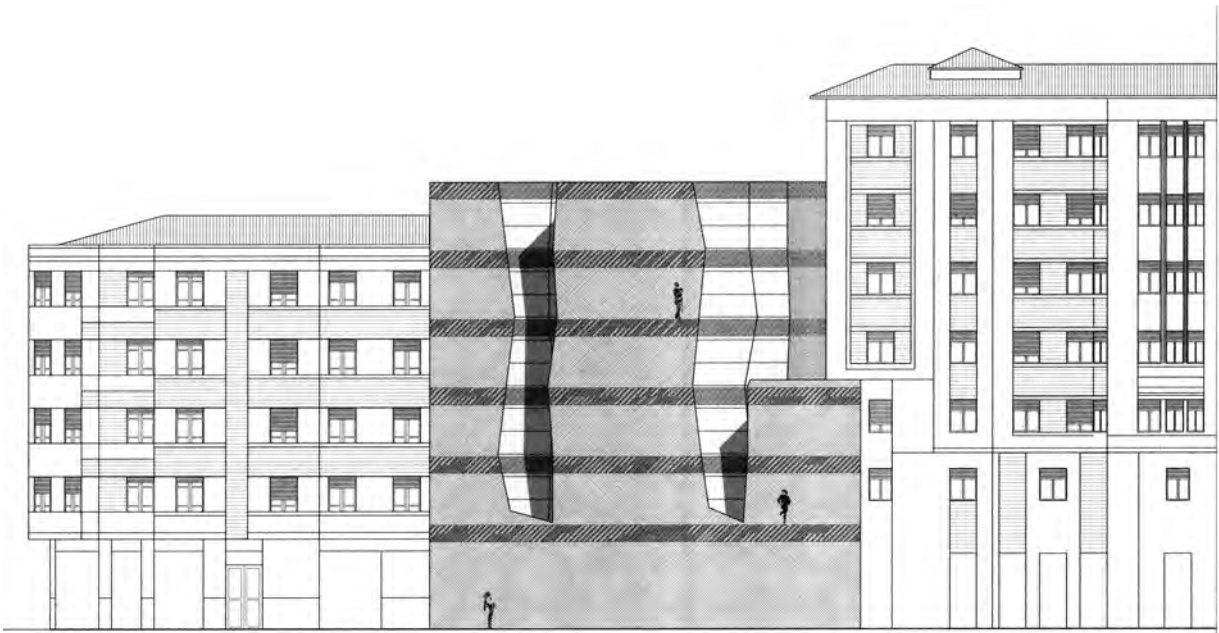
12

13

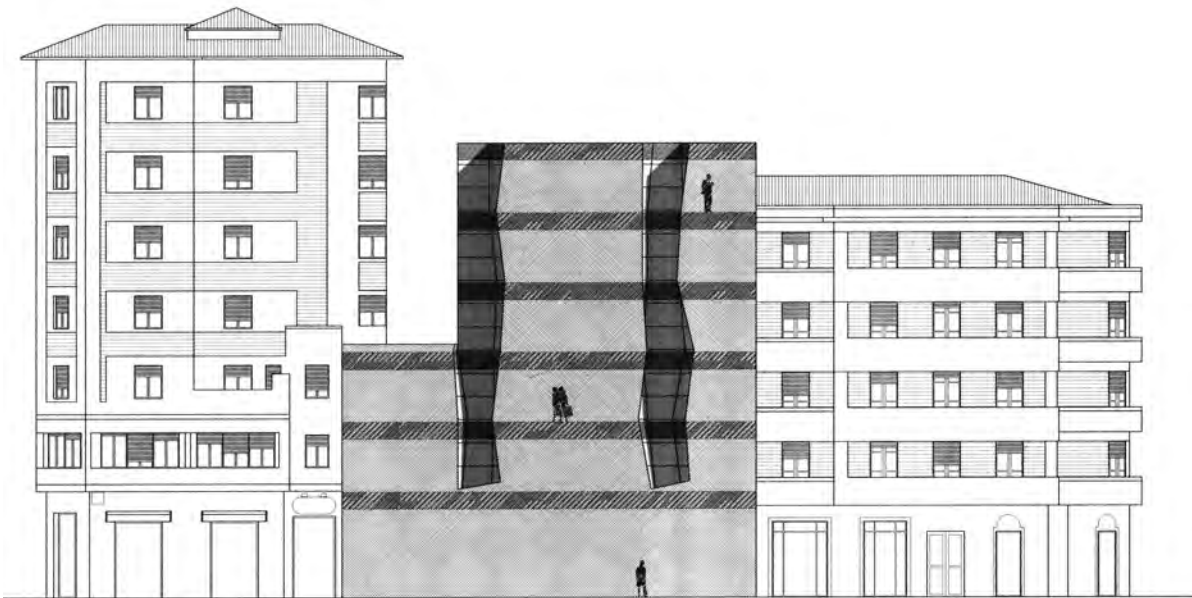
14

1. Flagstone of lightened reinforced concrete e=25 cm
2. Sheet metal frame
3. False ceiling
4. Lamp built into false ceiling
5. Translucent glass with metal fastening to slabs
6. Wall reinforced concrete e=15 cm
7. Metal rail d=9 cm
8. Double glass with air chamber
9. Pillar HA-25, 25 x 25 cm
10. Nailed phenolic panel
11. Waterproof sheet
12. Filler plug
13. Ventilation grille
14. Air conditioning duct (galvanized steel + insulation)

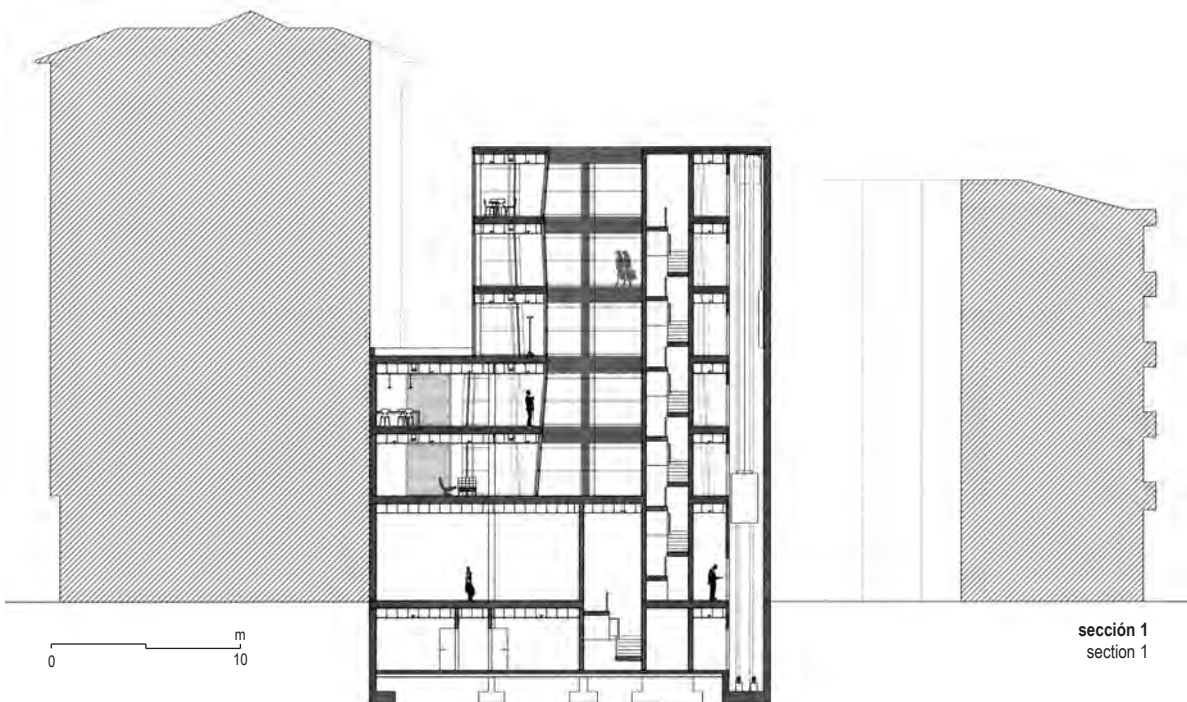
detalle constructivo  
constructive detail



alzado este  
east elevation

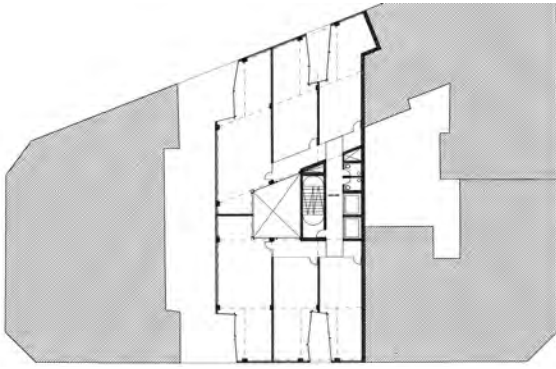


alzado oeste  
west elevation

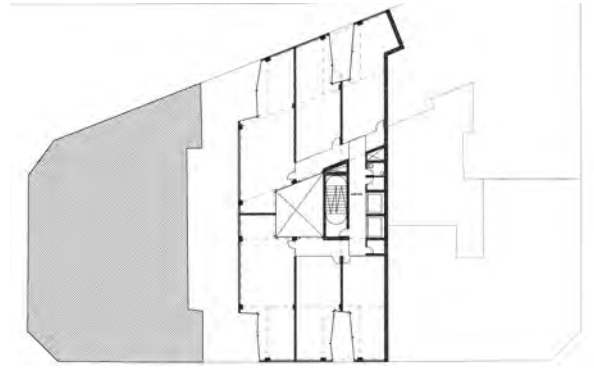


sección 1  
section 1

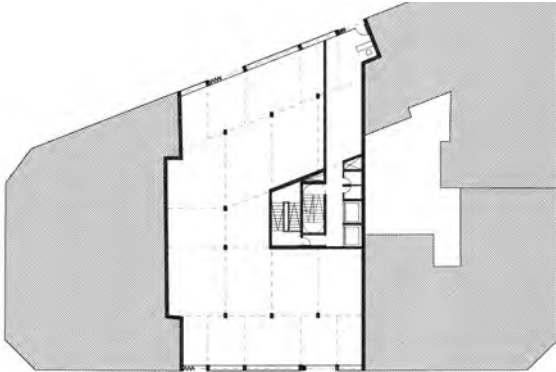




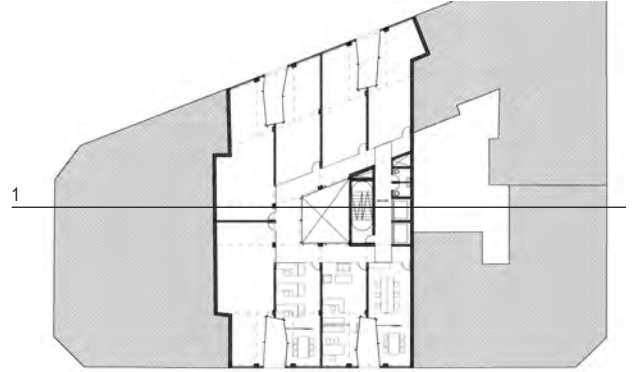
planta 3-4  
floor 3-4



planta 5  
floor 5



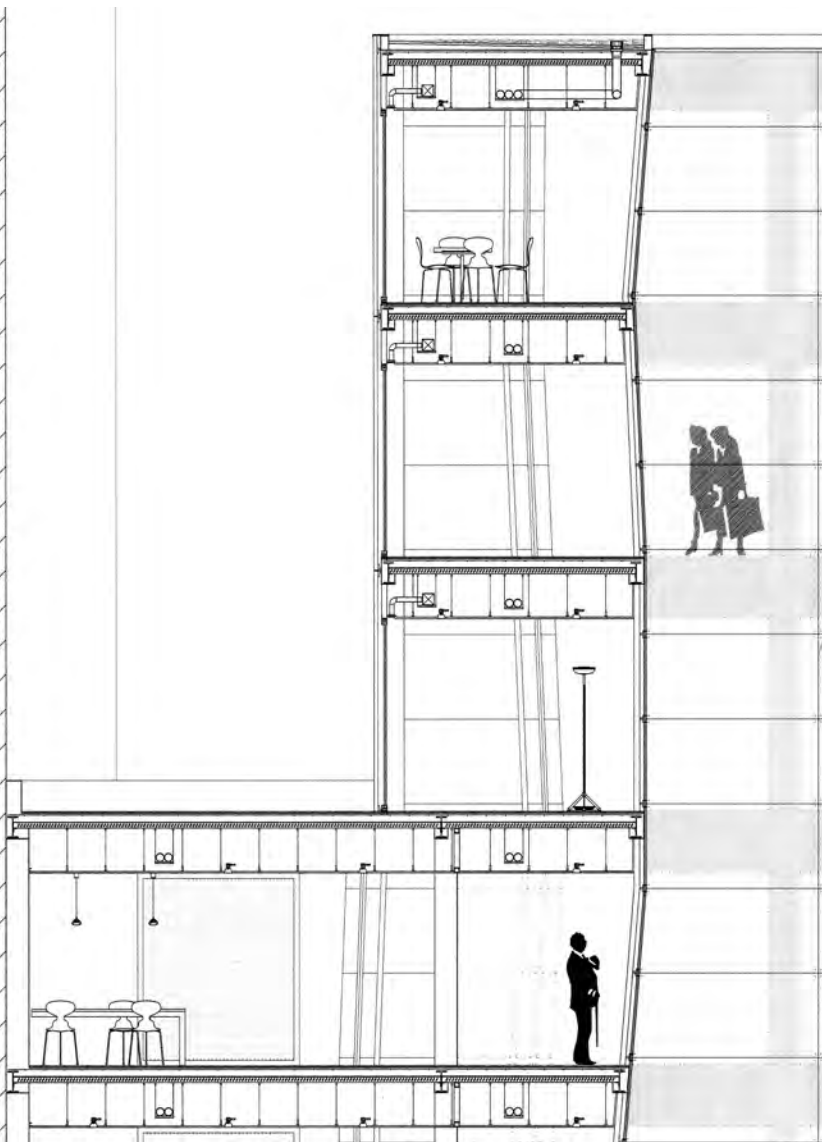
planta baja  
ground floor



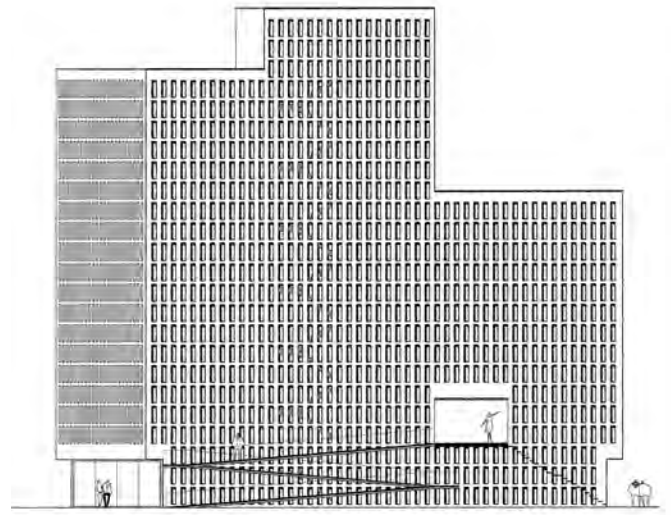
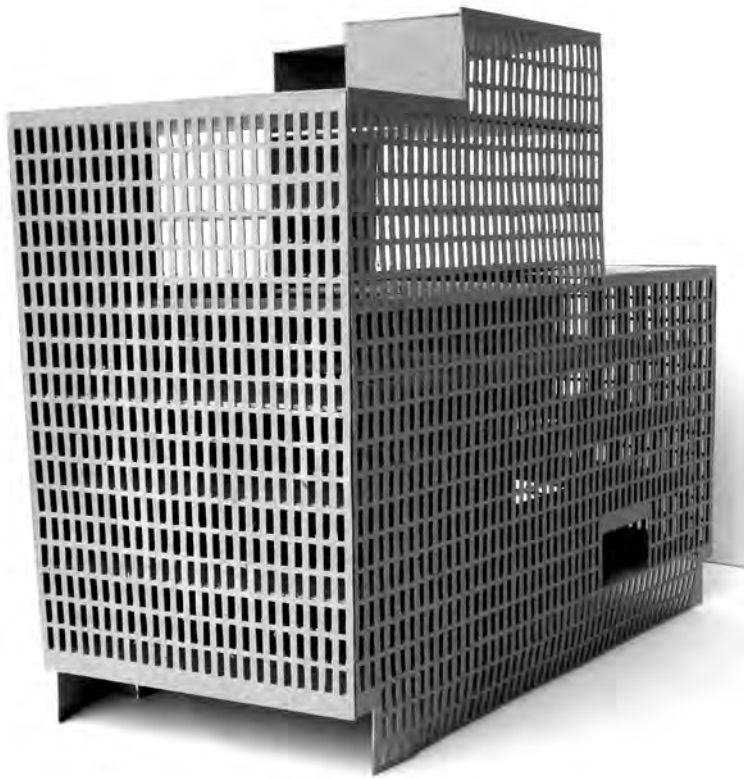
planta 1-2  
floor 1-2



ana lidia gonzález



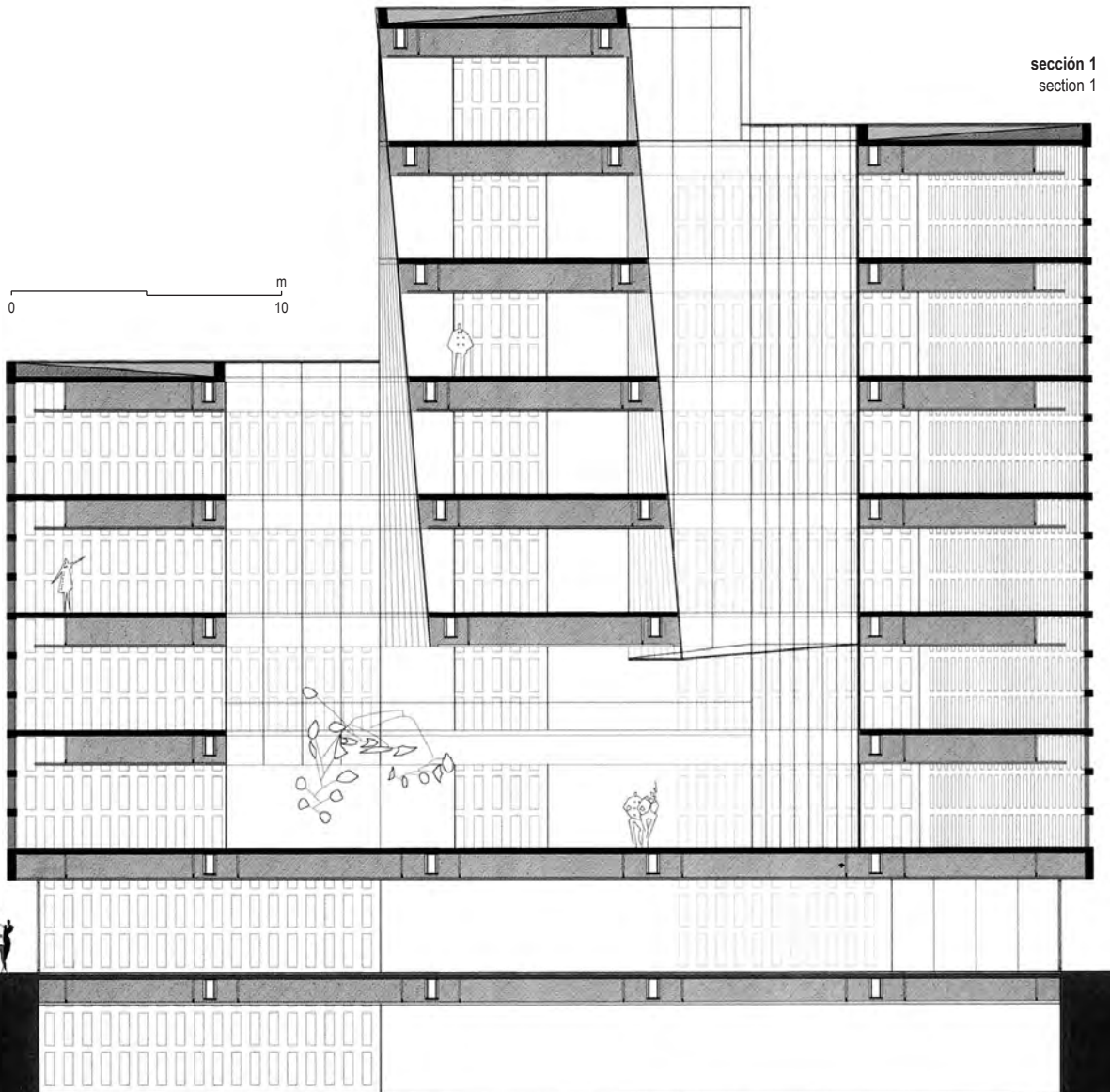
detalle de sección  
section detail



alzado acceso lateral  
lateral access elevation

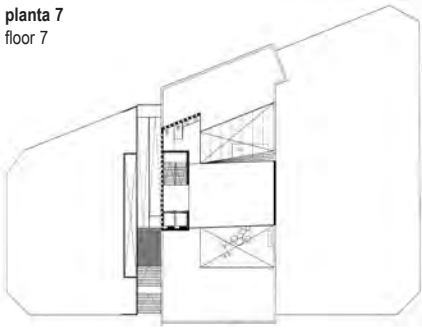
0 m 20

jorge losada

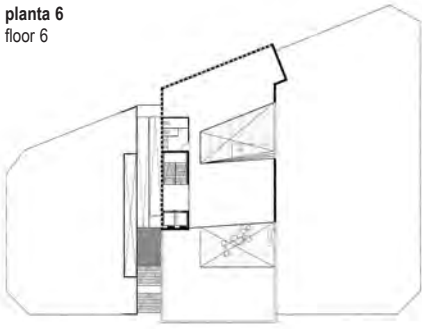


sección 1  
section 1

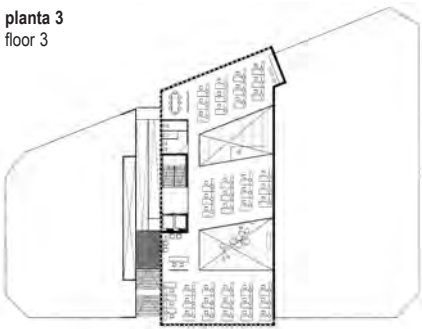
planta 7  
floor 7



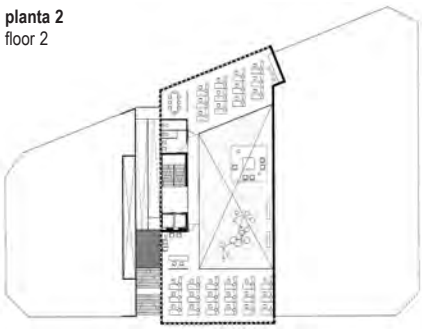
planta 6  
floor 6



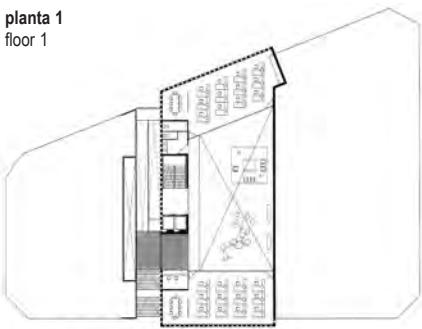
planta 3  
floor 3



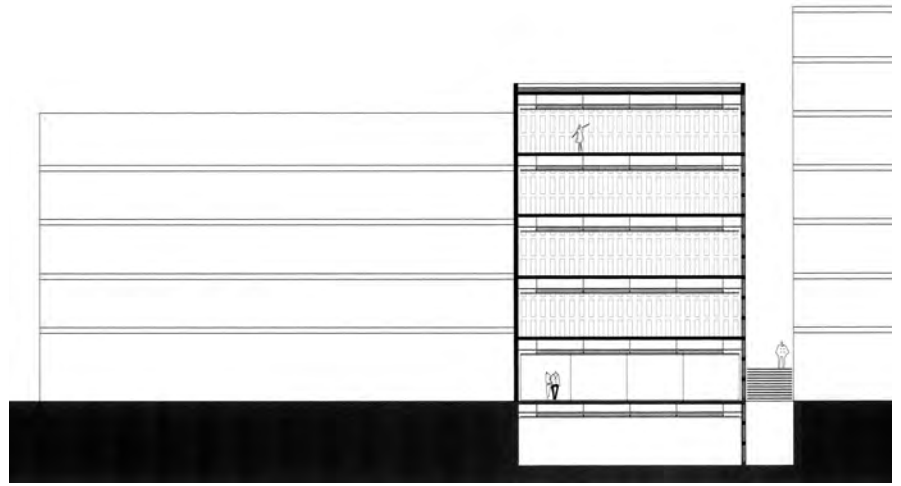
planta 2  
floor 2



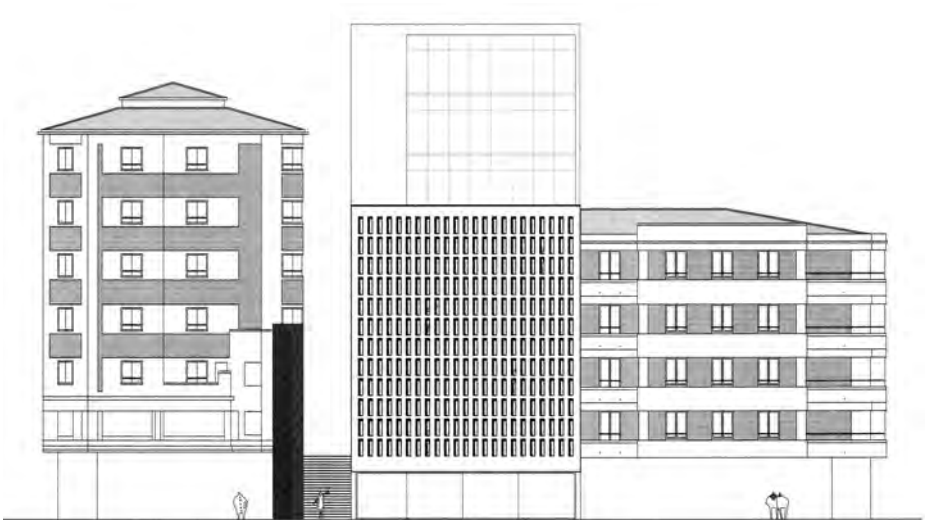
planta 1  
floor 1



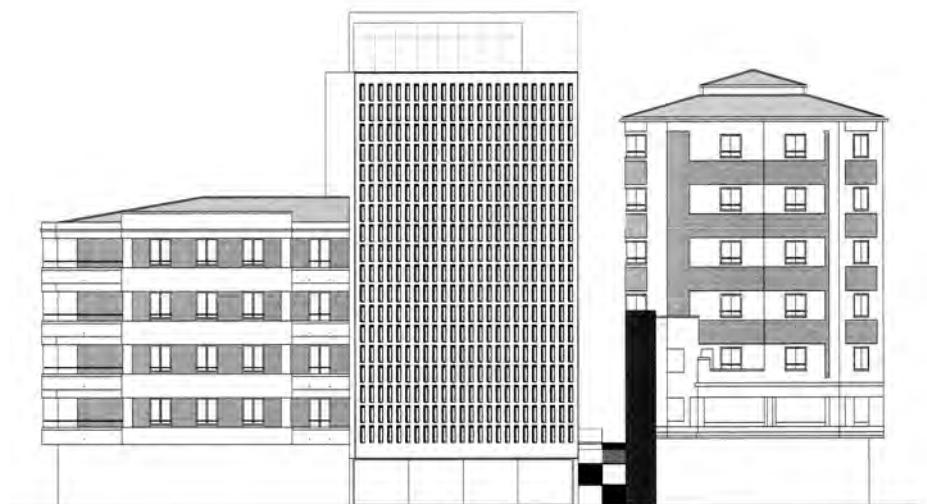
0 20 m



sección 2  
section 2



alzado oeste  
west elevation



alzado este  
east elevation

