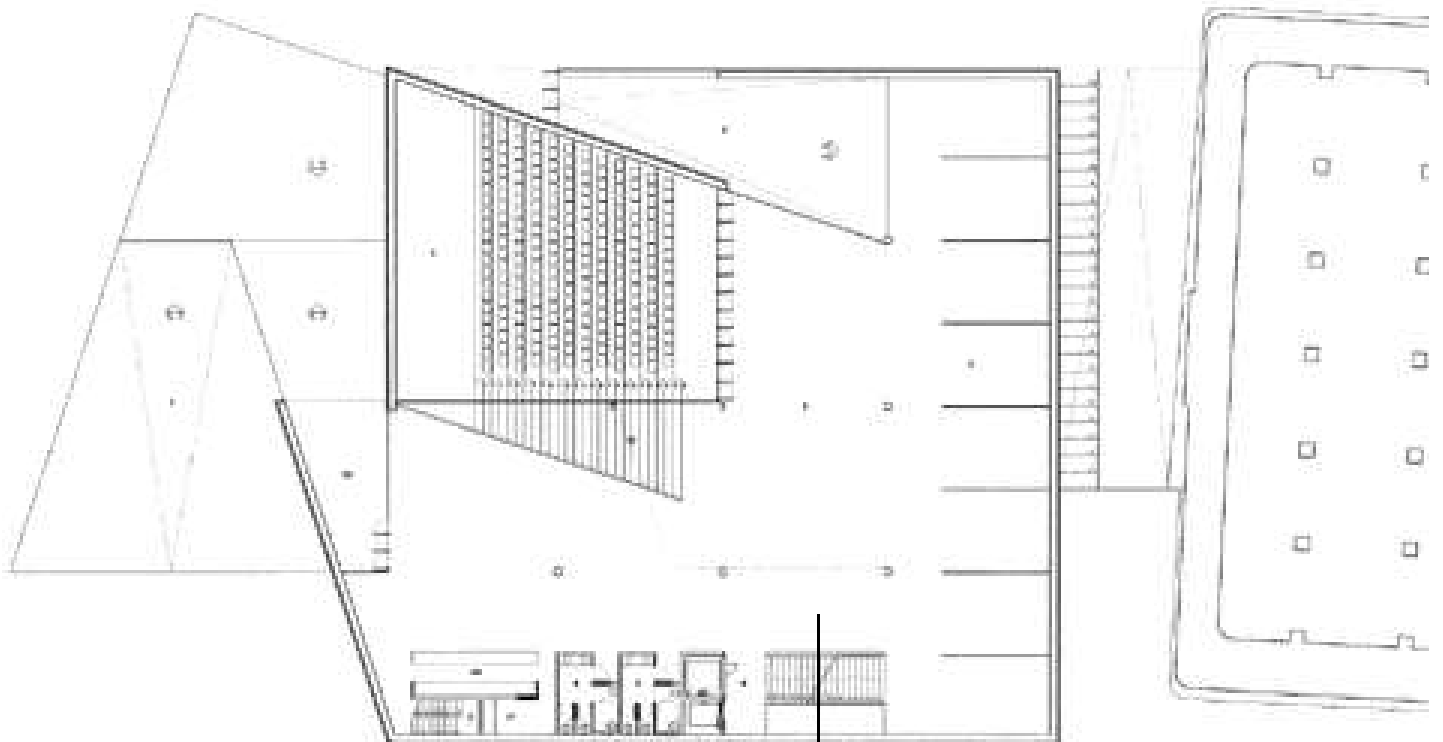


eduardo arilla

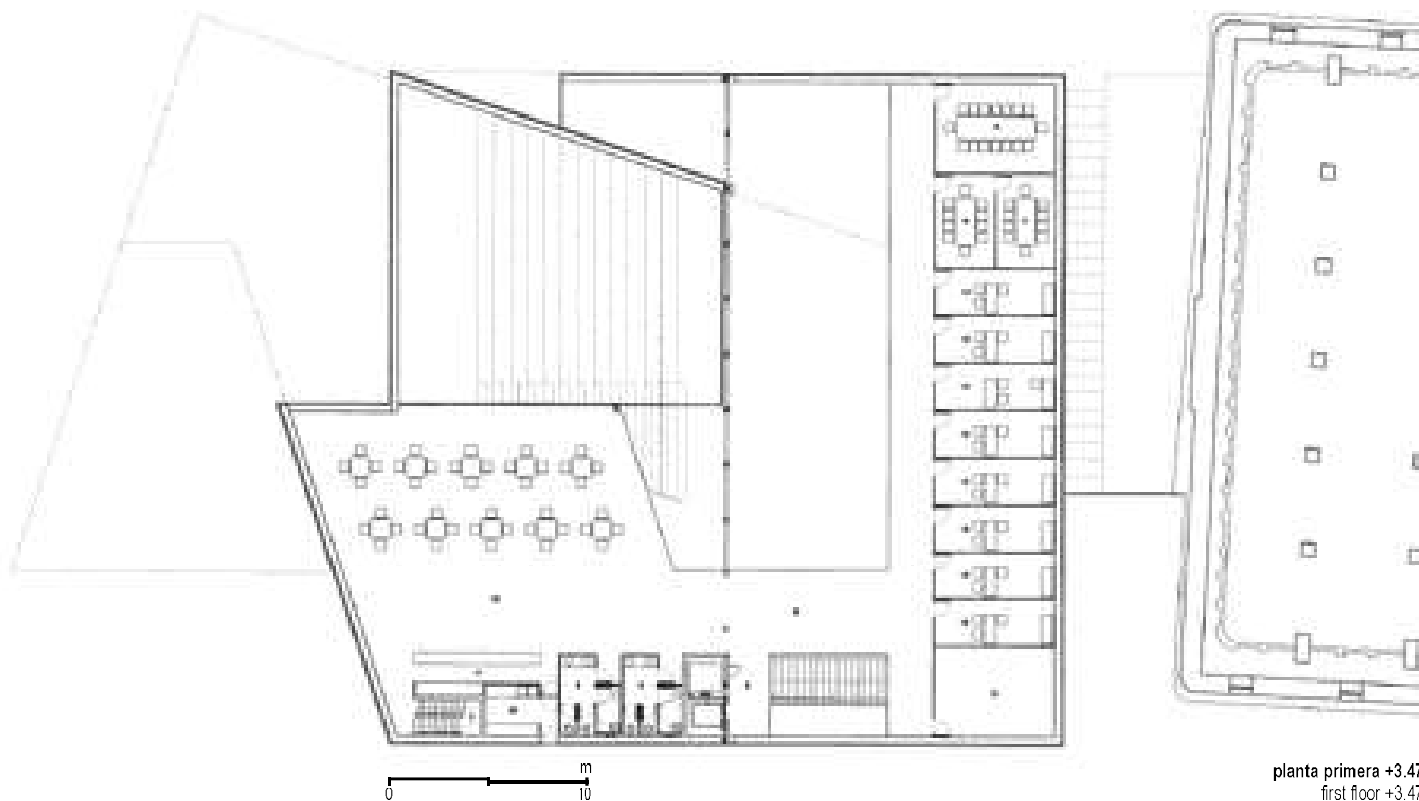


sección constructiva por la escalera de servicio
constructive section across the stairs

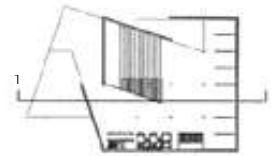
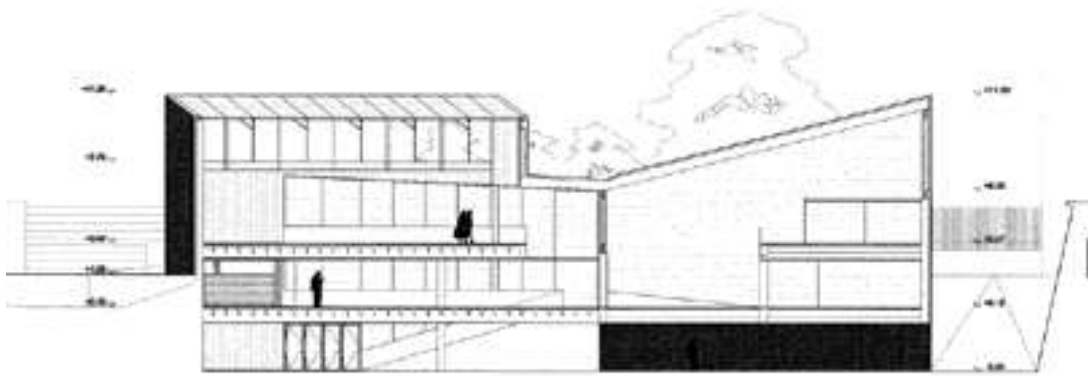
planta de acceso
access floor



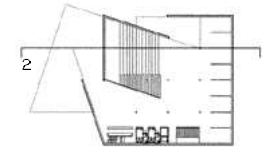
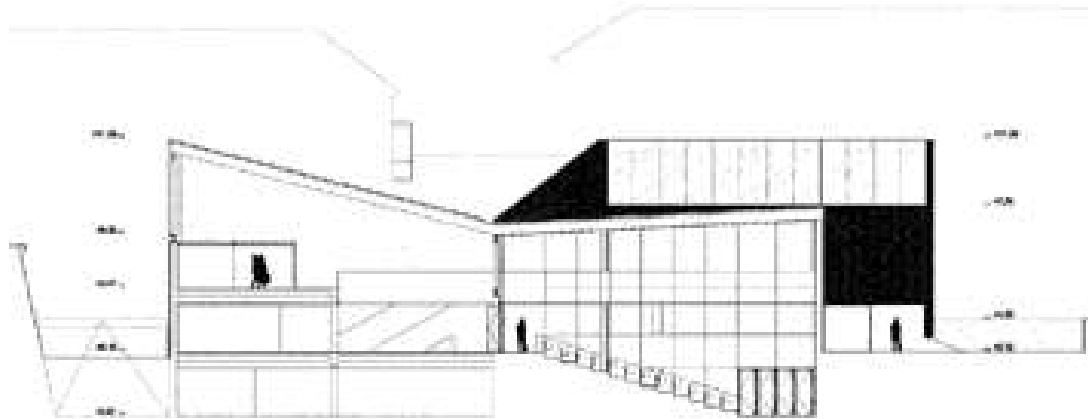
centro de recepción de visitantes en vitoria
 visitors reception area in vitoria



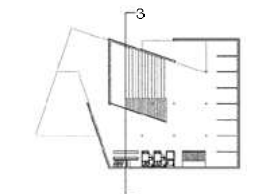
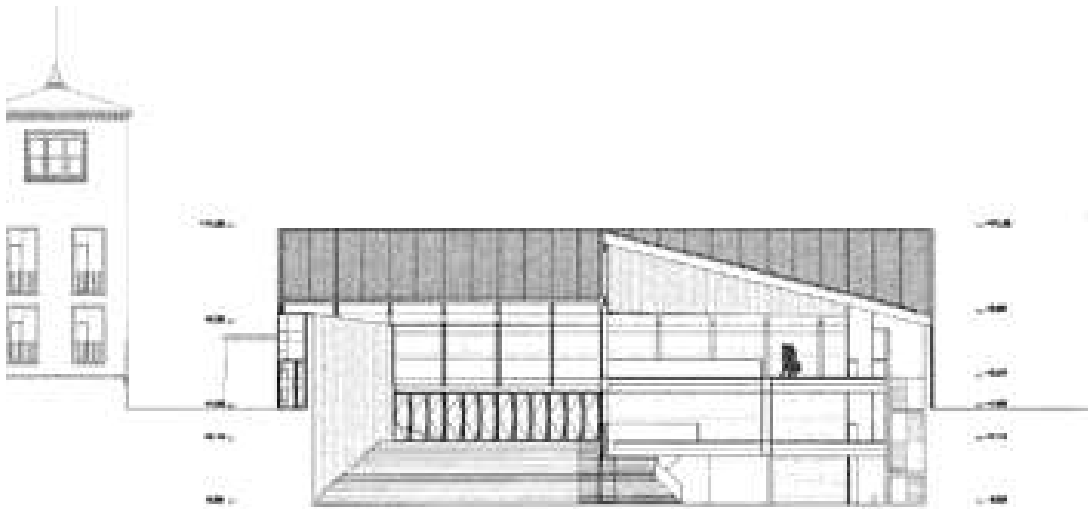
planta primera +3.47
 first floor +3.47



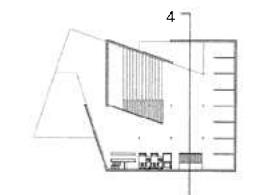
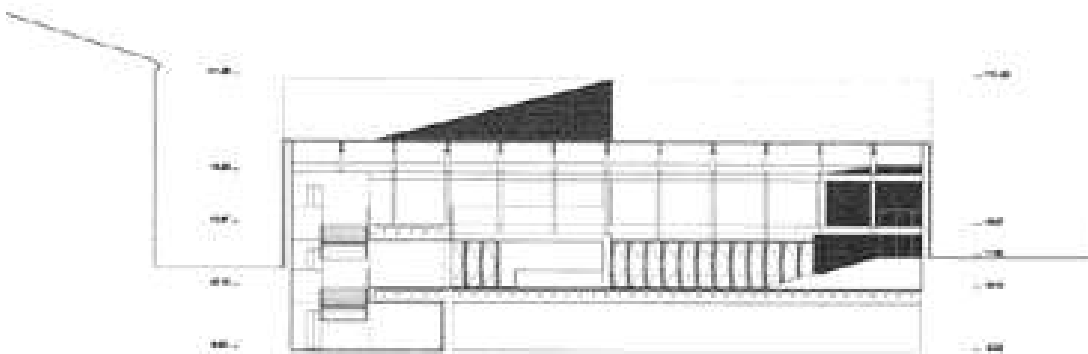
sección 1
section 1



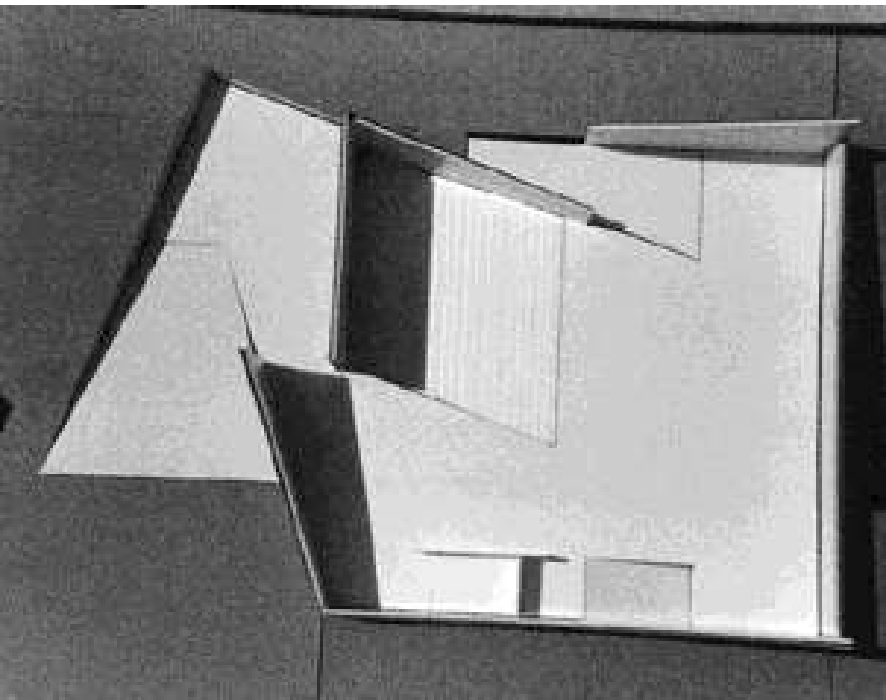
sección 2
section 2



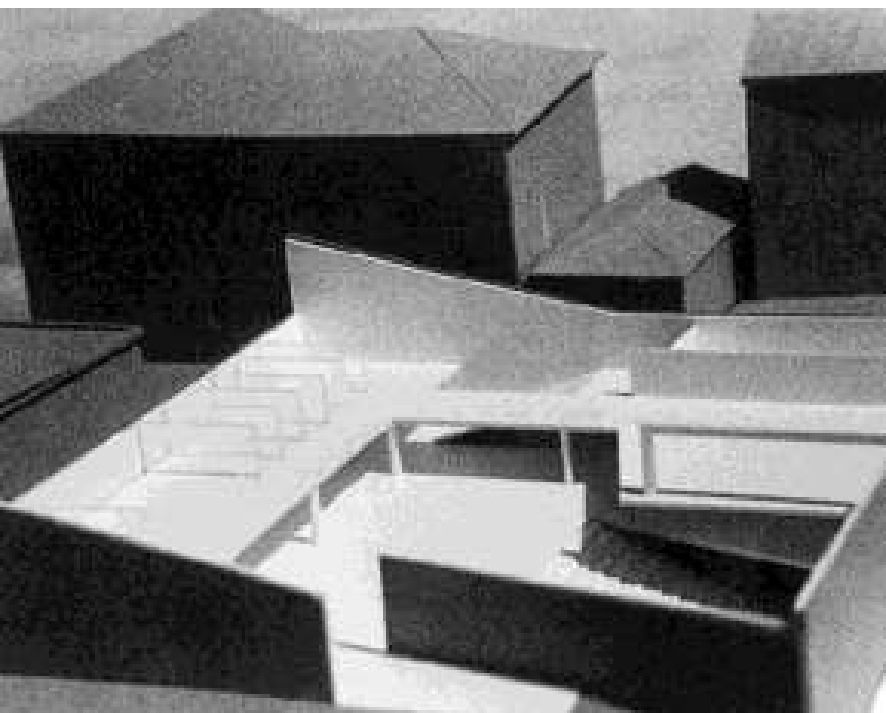
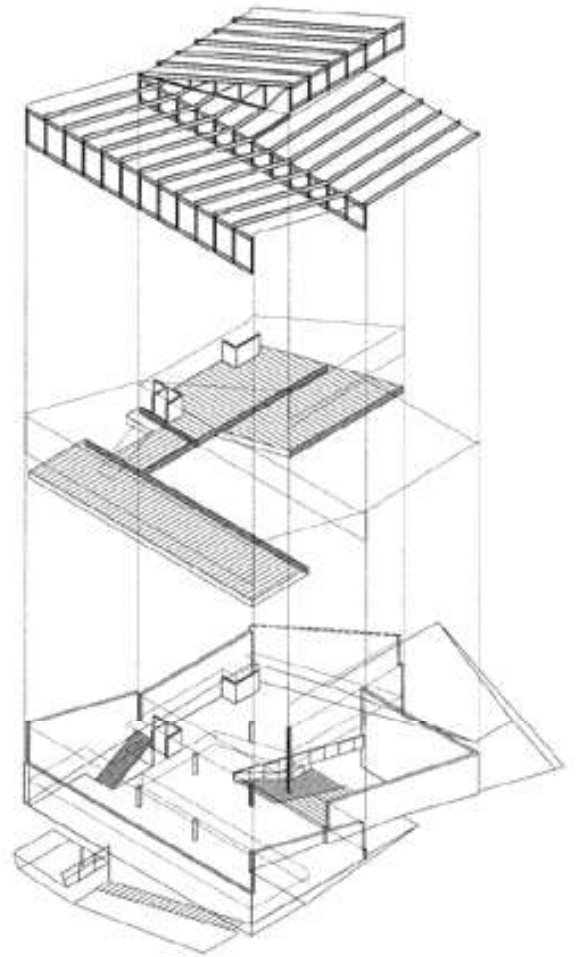
sección 3
section 3



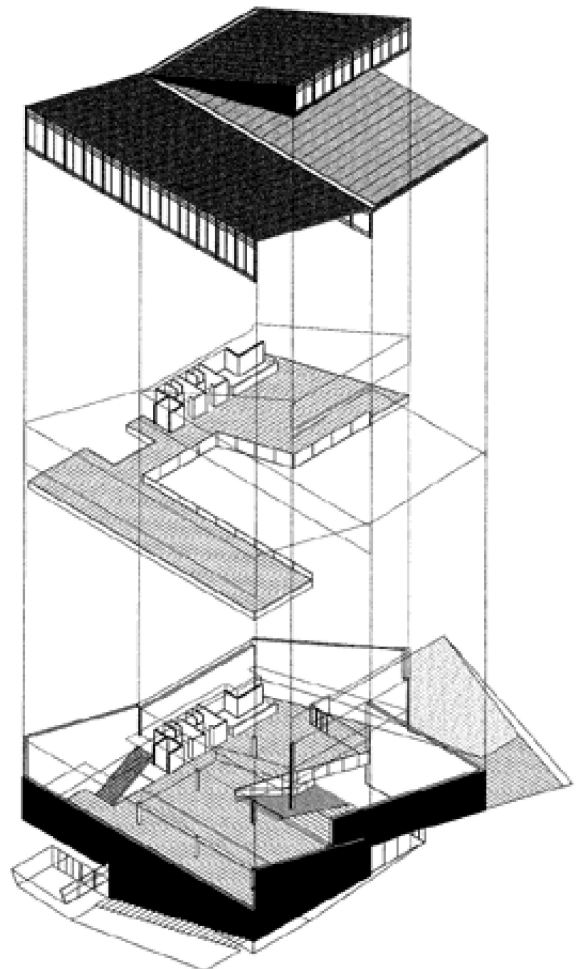
sección 4
section 4



esquema de la estructura
general structure

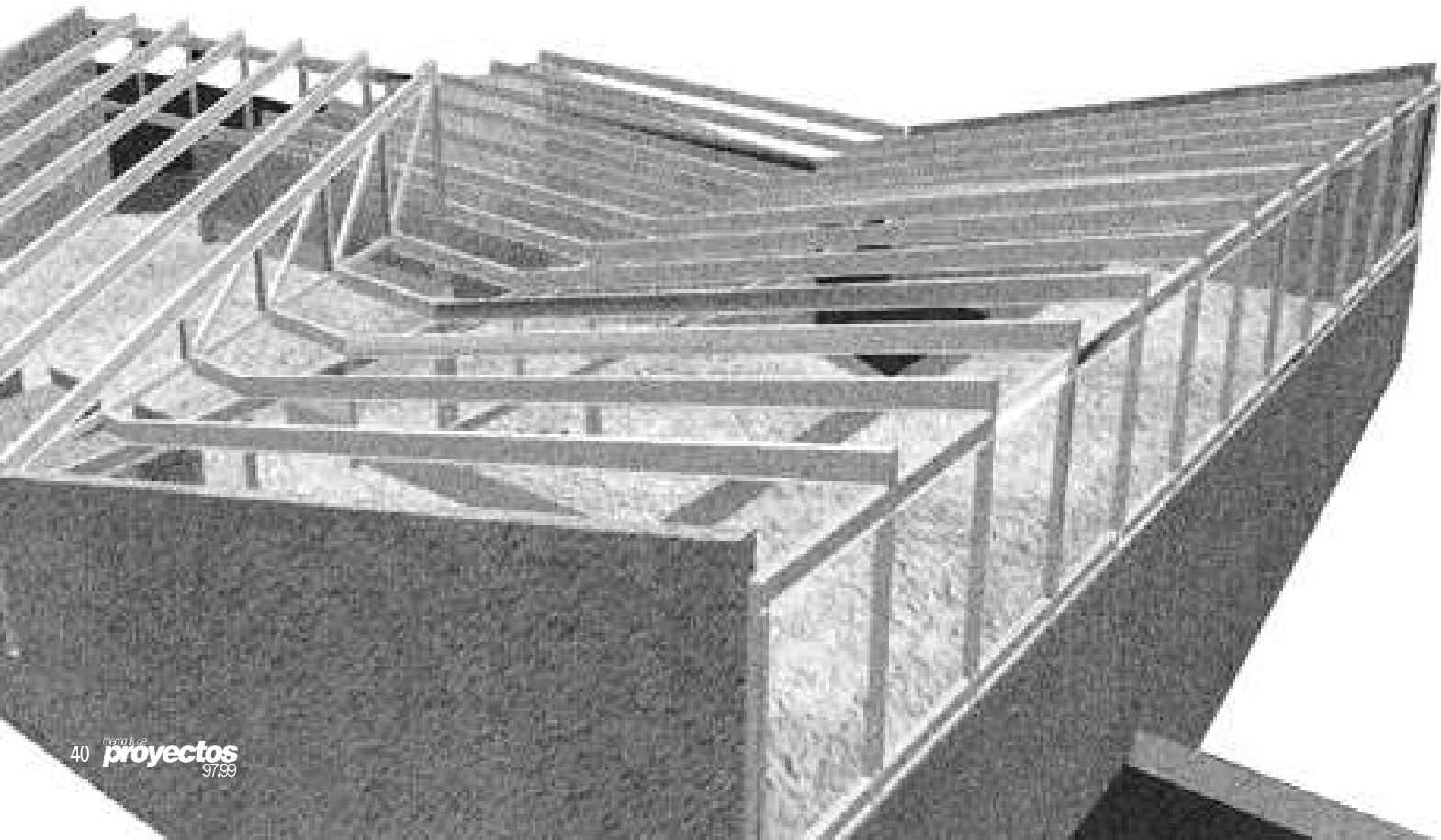


esquema del cerramiento
general enclosure



- 15 covered in cut granite country house stone thickness = 3 cm
- 25 15 mm galvanised steel banister 15 mm painted with resin
- 28 2 m anchorage with 16 355 cm self-threading countersunk screws
- 29 polished country house granite flooring, thickness = 2 cm, held onto a radiating with 1 cm of mortar
- 30 55 cm radiating floor plaque with polytherm 16x2 polytherm tubing
- 31 35 mm expanded polytherm plaque
- 34 N series plaster substructure in the 35 mm ceiling
- 36 20 mm false plaster ceiling
- 37 series N plaster plate false ceiling
- 38 metal beams with 48 mm N series Plaster for the extrados
- 39 the extrados, made of 2x21 mm N series Plaster plates, in the toilets and in damp rooms will be waterproof
- 41 washbasin supported by metal beams, which are built into the wall. The washbasin is in white porcelain and is the "Altros" brand
- 44 fluorescent "Airtal" lead 1x58 a 48 without a diffuser
- 51 injected polyurethane thermal insulator, thickness = 4 cm
- 52 reinforced concrete wall, thickness = 30 cm
- 53 Halfen hsf-z type stainless steel anchoring
- 54 small 10x10 stoneware Hisvalit plaques. Colour dark grey
- 55 polytherm strips on the outer edge with elastic gasket in the floor structure
- 64 1.5 reception with stoneware held in place with plaster extrados
- 70 60.30.2 steel tube with mobile assembly structure
- 71 D.M. 2 cm board covered in Formica, colour dark grey
- 76 waterproof asphalt lamina adhered to a concrete wall
- 77 flooring covered with a fine granite layer which incorporates two types of mica stone
- 78 sand bed enriched with an M-20 base of paving stone
- 87 flat stone base with 15 cm of reinforced concrete mesh with a Macsa distribution
- 82 lighting built into the HZQ ceiling
- 88 20 cm layer of gravel enclosed by the foot of a ditch
- 90 model delta 30.15 prefabricated concrete channel
- 93 neoprene gasket for the flagstone base of the outer wall
- 101 0.5 kg/m² of asphalt priming
- 102 waterproof asphalt lamina welded onto a concrete wall
- 103 3 mm felt separator between the grave and the waterproof lamina
- 104 fixed optical light-up walk model 7179 I guzzini
- 121 L100.65.7 galvanised steel beam anchoring banister and bodywork
- 122 porous polyethylene drainpipe ø 20 cm
- 123 reinforced concrete lintels which have been pile driven Ha 50 cm
- 124 excavation of lintel using a well
- 125 small bed of liquid concrete received by a drainage tube
- 126 reinforced 18 cm concrete floor tile
- 127 concrete Socrates bench without back support
- 128 standard 60w Troll downlight built into the ceiling
- 129 airtal lead built into a stainless steel box with a 5+5 sheet of glass and a translucent butyral and metallic mesh
- 130 glass treated with indirect acid lighting from the counter
- 131 sleeper made of 8x3 cm tall wood made into cafeteria shelving
- 132 10x2 cm to 11 cm tall wood shelves

- 15 aplacado de piedra serrada granito gris quintana e=3 cm
- 25 barandilla de acero galvanizado 15 mm trazado con resinas
- 28 andaje 2 m 16 auto-roscantes cabeza avellanada s 35 cm
- 29 pavimento de piedra pulida granito gris quintana e=2 cm recibido con 1 cm mortero cda a placa de suelo radiante
- 30 placa de suelo radiante 55 mm con tubería polytherm 16*2
- 31 placa de poliestireno extruido 35 mm (politherm)
- 34 subestructura pladur serie n en techo 35 mm
- 35 falso techo placa de pladur 20 mm
- 37 falso techo de placa de pladur hidrófugo serie n 20 mm
- 38 perfilera propia pladur 48 mm serie n para trasdosado
- 39 trasdosado placas de pladur serie n 2x13 mm en aseos y cuartos húmedos sera hidrófugo
- 41 lavabo sujeto a perfilera metálica embutida en pared, de porcelana en color blanco marca "altros"
- 44 regleta fluorescente airtal 1x58 a 48 sin difusor
- 51 aislamiento térmico poliuretano proyectado e= 4 cm
- 52 muro de hormigón armado e= 30 cm
- 53 andaje de acero inoxidable halfen tipo hsf-z
- 54 plaqueta de gresite 10x10 hisvalit color gris marengo
- 55 tira perimetral politherm con junta elástica en forjado
- 64 mortero cda 1,5 cm recepción gresite a trasdosado de pladur
- 70 tubo de acero 60.30.2 estructura montaje mobiliario
- 71 tablero de D.M. 2 cm chapeado en formica color gris marengo
- 76 lámina impermeabilizante asfáltica, solape de muro adherida con solape a muro de hormigón
- 77 pavimento adoquinado a base de lajas de granito albero peral
- 78 cama de arena enriquecida M-20 base de adoquinado
- 87 solera 15 cm hormigón armado malla de reparto macsa
- 82 luminaria estancia empotrada a techo HZQ
- 88 capa de grava 20 cm cota de arranque excavación
- 90 caz de hormigón prefabricado modelo delta 30.15
- 93 junta elástica de neopreno solera exterior a muro
- 101 imprimación asfáltica 0,5 kg/m²
- 102 lámina impermeabilizante asfáltica unida con soplete a muro de hormigón
- 103 fieltro 3 mm separador de grava y lámina impermeabilizante
- 104 light-up walk iguzzini óptica fija modelo 7179
- 121 perfil de acero galvanizado L100.65.7 andaje barandilla de chapa
- 122 tubo poroso de drenaje polietileno ø 20 cm
- 123 zampeado de zapatas de hormigón armado Ha 50 cm
- 124 excavación de zapata mediante pozo
- 125 cuna de hormigón en masa recepción de tubo drenante
- 126 losa de hormigón armado 18 cm
- 127 banco sócrates de hormigón sin respaldo
- 128 downlight troll estandard 60w empotrado en techo
- 129 regleta airtal empotrada en caja de acero inox y tapa de vidrio 5+5 con butiral translúcido y malla metálica
- 130 vidrio tratado al ácido iluminación indirecta de mostrador
- 131 rastrel de madera elondo 8x3 cm entablado en cafetería
- 132 listones 10x2 cm a 11 cm madera de elondo



sección constructiva
por la escalera de servicio
constructive section
across the stairs

0 1 m

