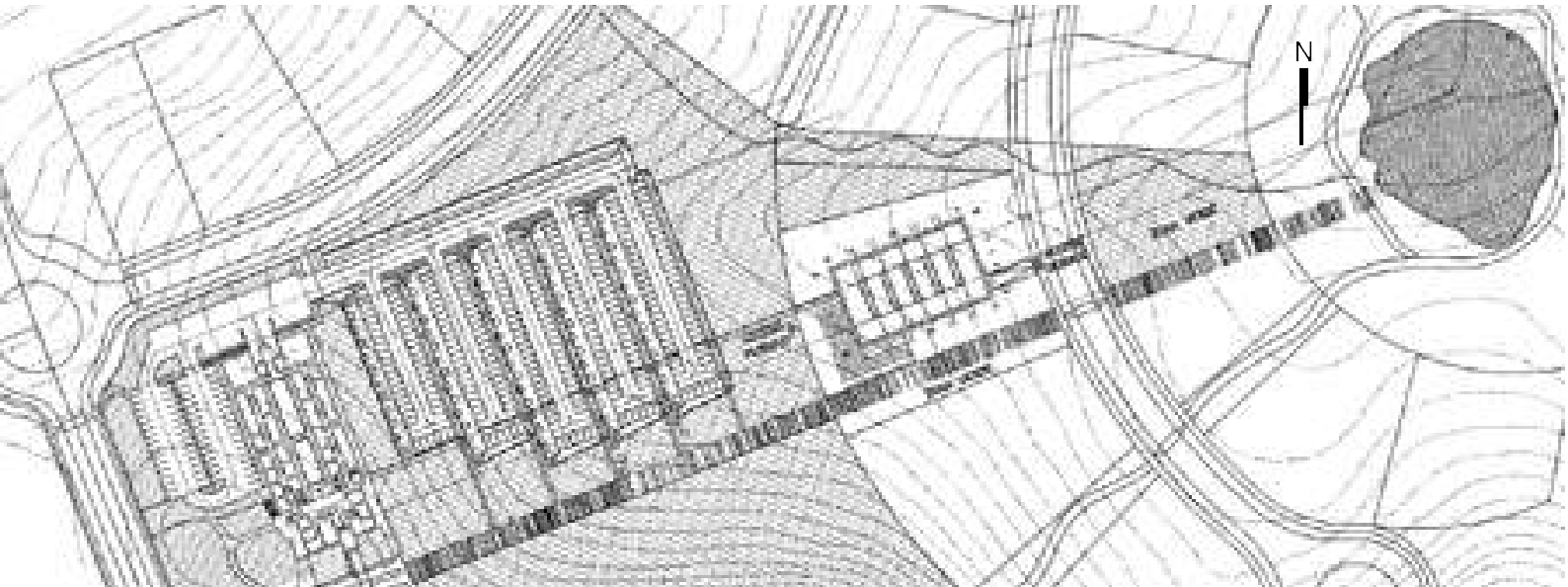
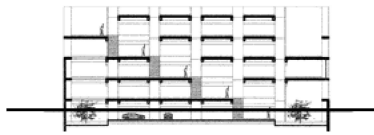


jacobo bouzada

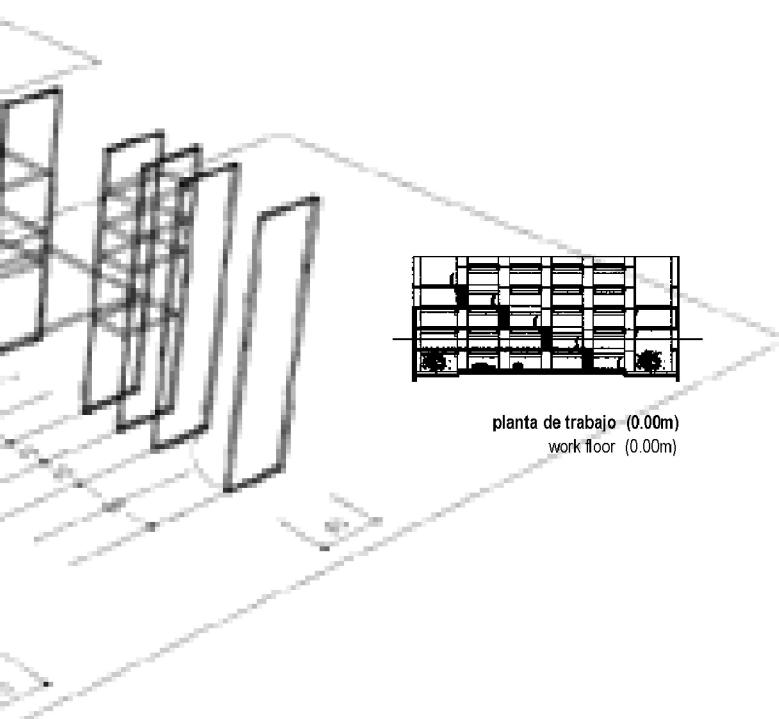
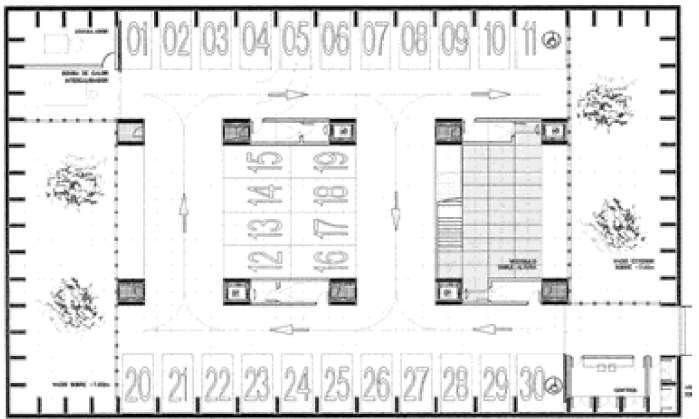
edificio de oficinas en vitoria
office building in vitoria



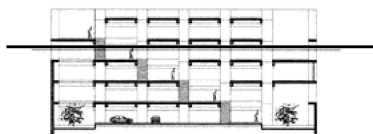
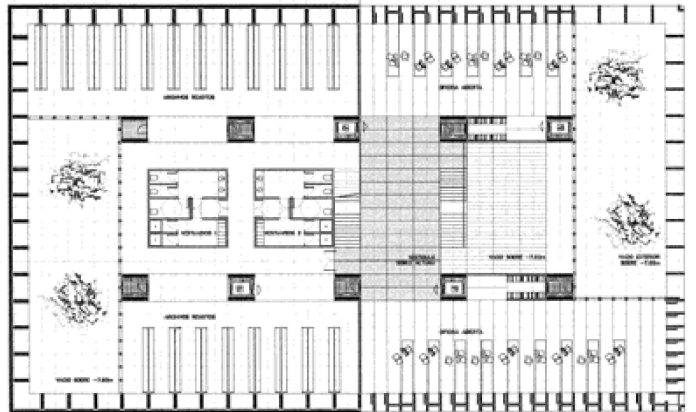
planta de situación
site plan



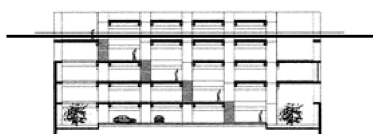
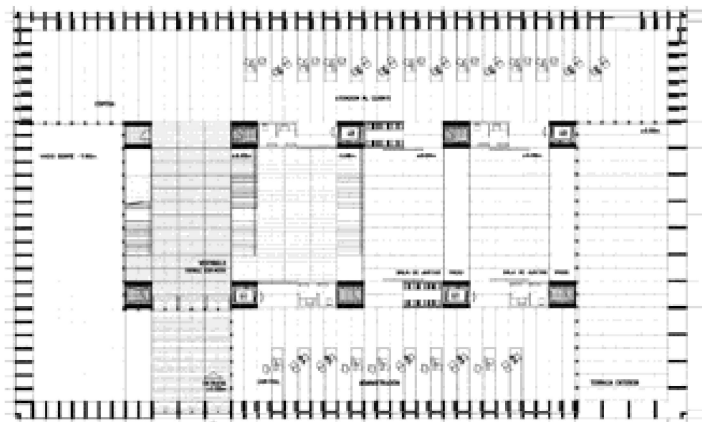
planta del garaje (-3.96m)
parking floor (-3.96m)



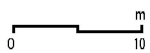
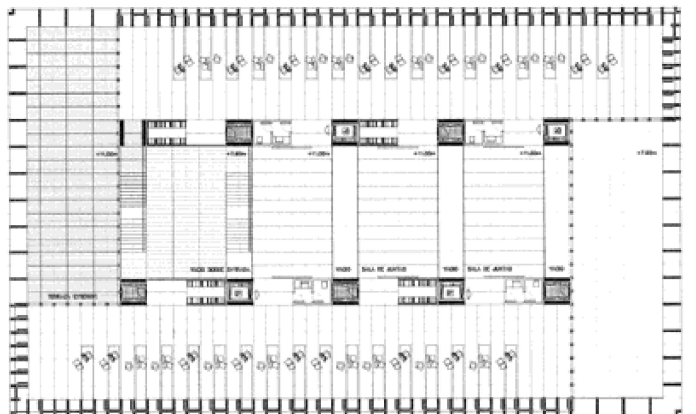
planta de trabajo (0.00m)
work floor (0.00m)



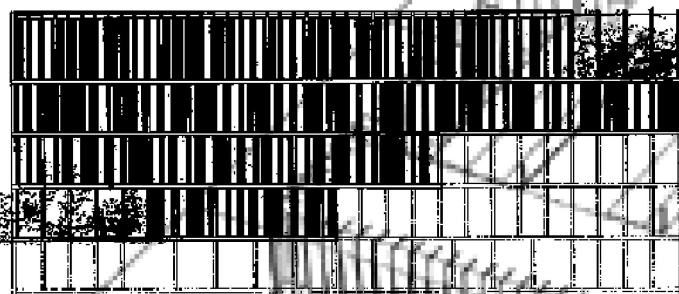
planta público (+7.92m)
public floor (+7.92m)



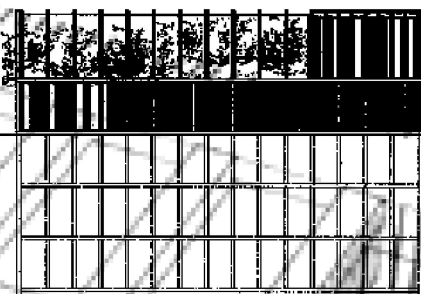
planta de dirección (+11.88m)
executive floor (+11.88m)



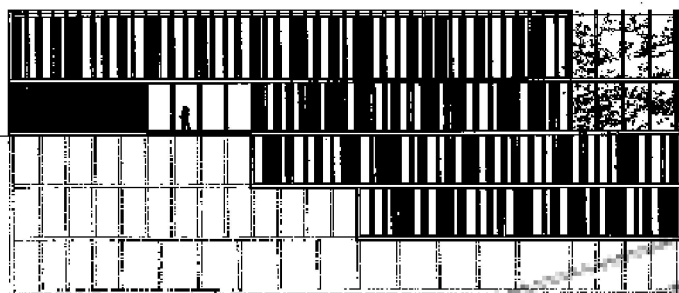
alzado norte
north elevation



alzado oeste
west elevation



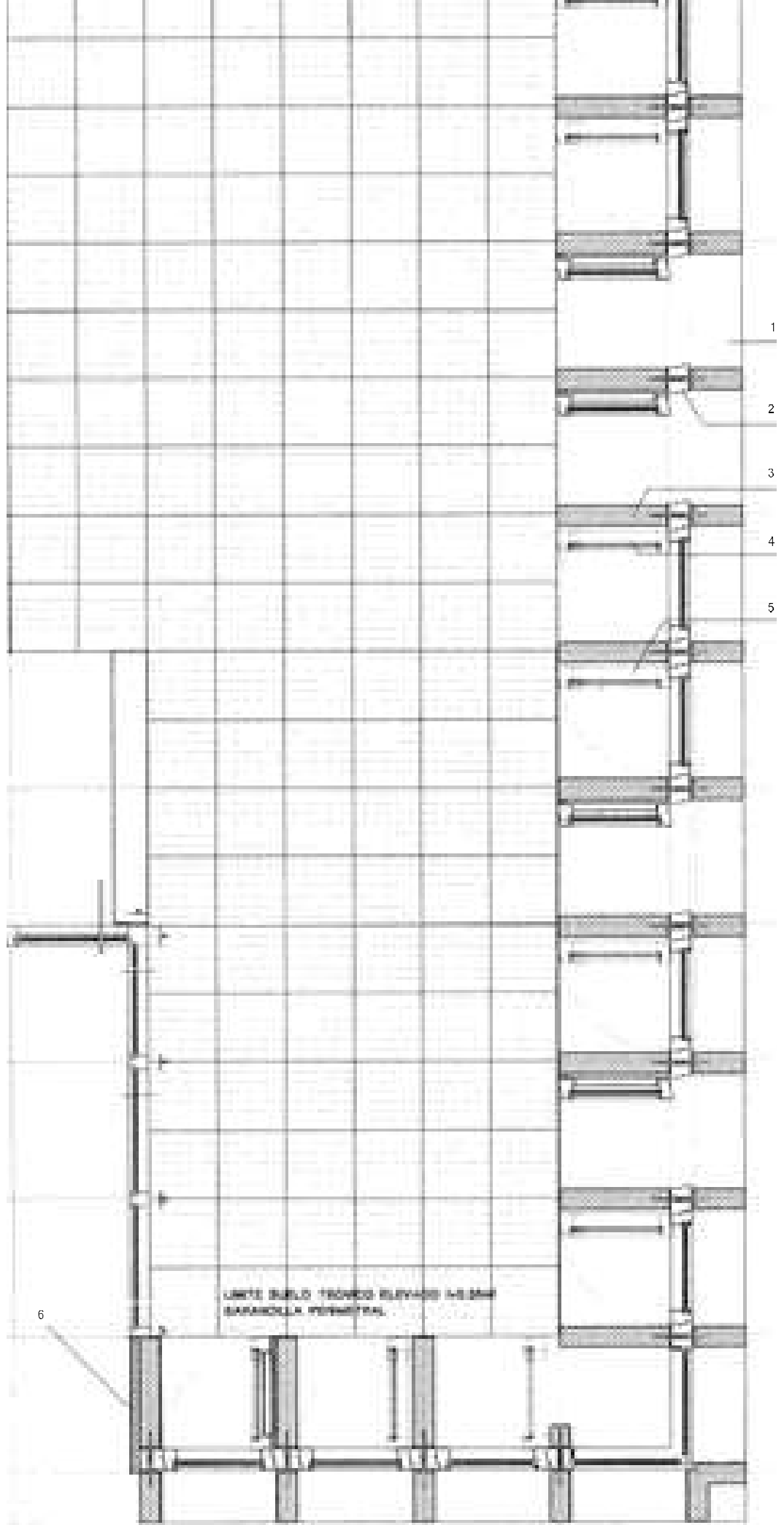
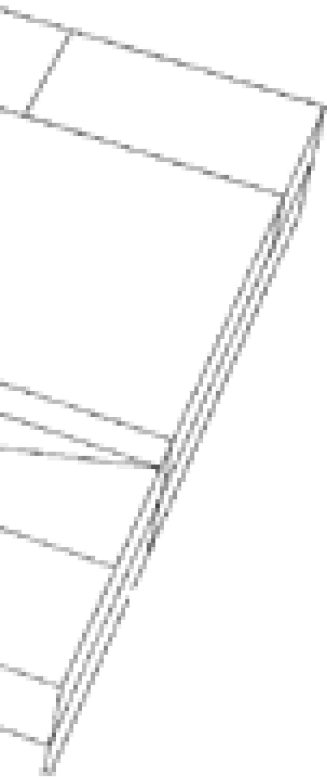
alzado sur
south elevation



alzado este
east elevation



sección horizontal cerramiento
horizontal section by enclosure



- 1 prefabricado hormigón no estructural
control solar
protección carpinterías
- 2 marco ventana V 1
rotura puente térmico
- 3 pantalla estructural prefabricada
hormigón armado HA 35
- 4 contraventana interior C.1
control lumínico
- 5 hoja ventana practicable V 1
control ambiental
limpieza de fachada
- 6 continuidad carpintería-aislamiento
rotura de puente térmico

- 1 prefabricated non-structural concrete
solar control
metalwork protection
- 2 v.1 window frame
thermal breaking bridge
- 3 prefabricated structural screen
ha35 reinforced concrete ha35
- 4 C1 interior shutter
light control
- 5 V.1 window which can be opened
control of ambience
cleaning of faAade
- 6 continuation of the metalwork/insulation
thermal breaking bridge

