

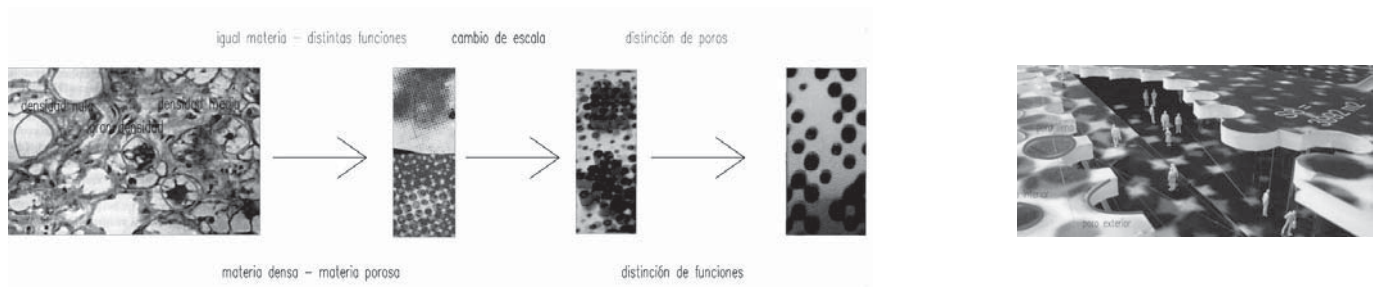


lucía p rez roca

centro de acogida para inmigrantes en Zaragoza
immigrant reception centre in Zaragoza

Un gran vaso de hormig n de 3.70 metros de profundidad genera el gran vac o sobre el que se posan 3 losas de hormig n que albergan cada trazo. Estos que forman a trav s de p rticos met licos cada 5 metros en sentido transversal al trazo, se genera una gran esqueleto met lico al que rodean las diferentes envolventes que constituyen los trazos. Como envolvente limite entre exterior e interior se crea una gran piel flexible de U-glass que dejar pasar la luz pero no permite ser visto.

An enormous 3.70 m deep concrete basin will create an empty space over which 3 concrete slabs will rest, each one housing a separate layout. A series of porticos spaced perpendicular to the layout at 5 metre intervals create an enormous metal skeleton, which is in turn surrounded by the various enclosures which make up the layout. An enormous, flexible skin made of U-glass forms the final enclosure between the inside of the structure and the exterior, letting in light while at the same time maintaining privacy.



espacio ocupado de funci n

tipos de poros

poros superior - abierto

necesidad

captar luz natural

materializaci n

envolvente transparente lucernarios en + 7.25 m vidrio

poros interior - abierto

dar luz al exterior

envolvente transparente lucernarios en + 0.00 m vidrio

poros exterior - abierto

mirar al exterior

envolvente transparente vidrio en fachada vidrio

poros interiores - cerrado

privacidad - oscuridad

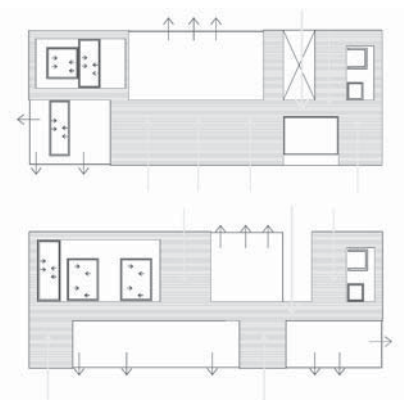
envolvente opaca en interior madera

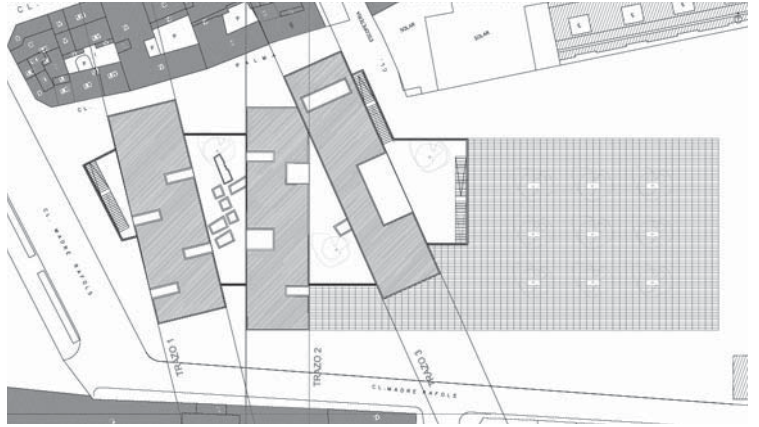
espacio libre

luz - libre circulaci n

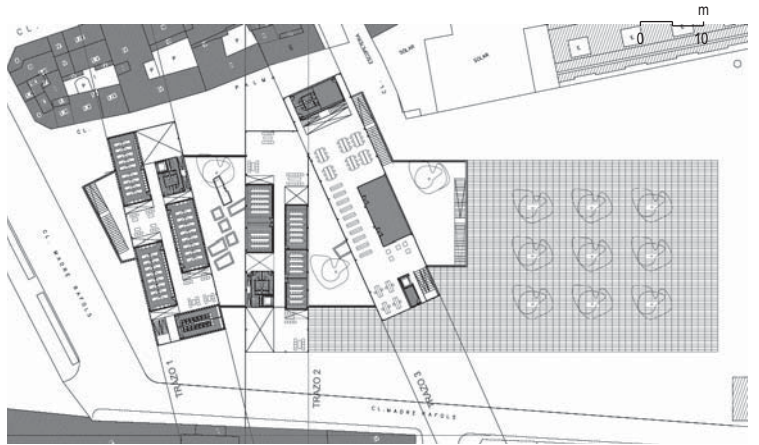
envolvente perimetral translucida

U-glass

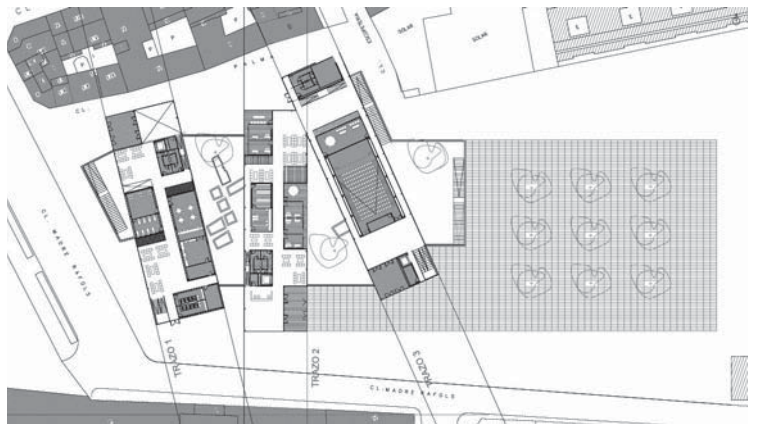




planta cota +7.5 m
floor level +7.5 m



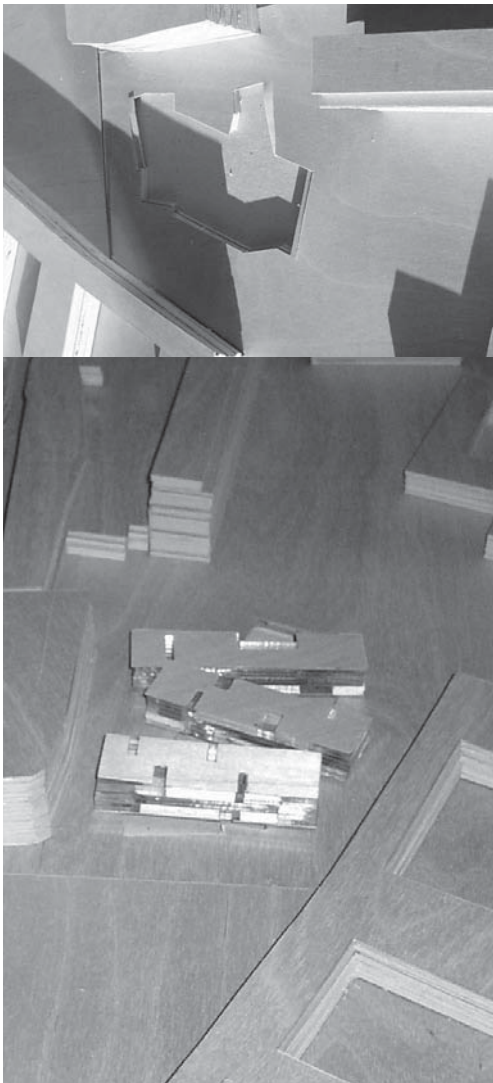
planta cota 3.2 m
floor level +3.2 m

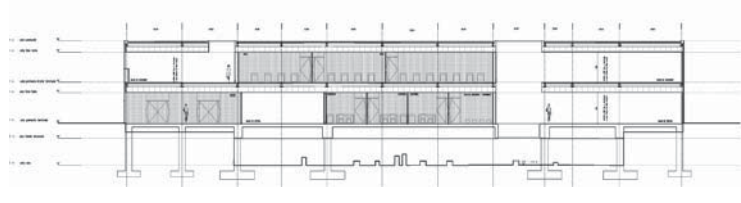
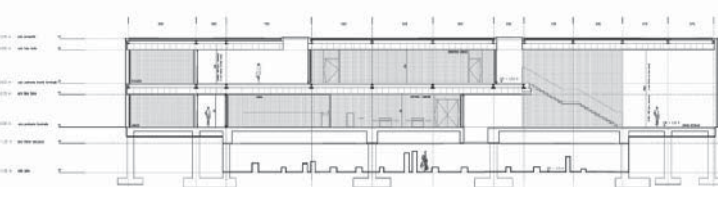
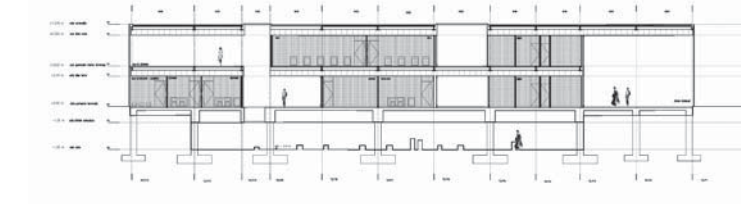
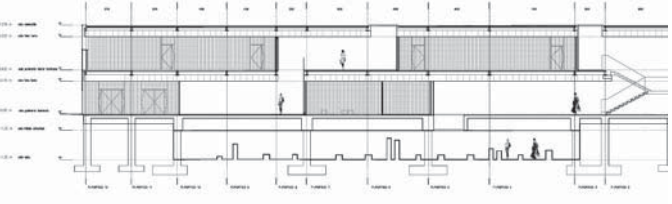
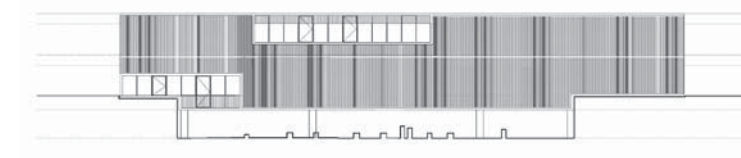
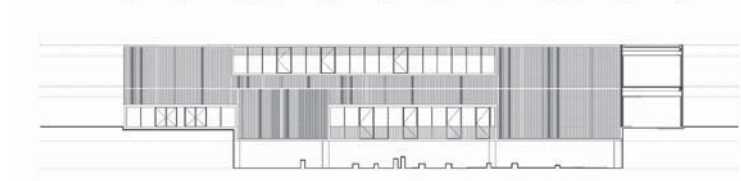
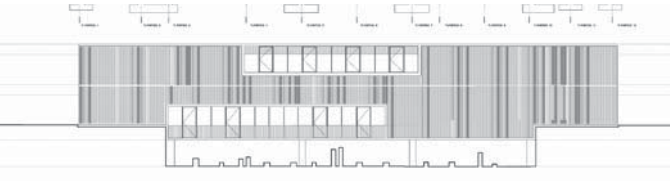
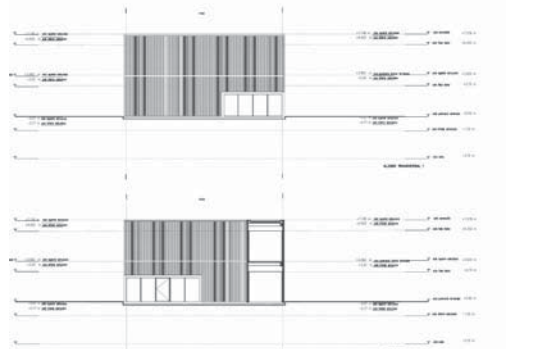
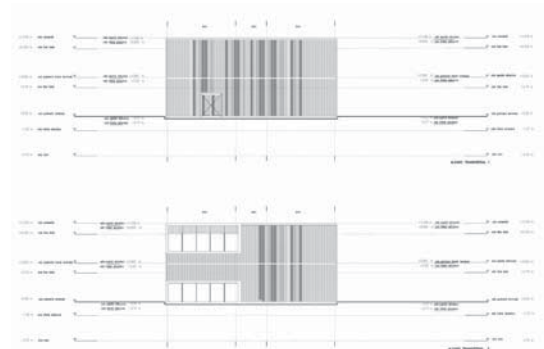
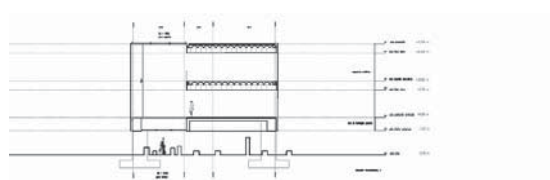


planta cota +0.0 m
floor level +0.0 m



planta cota -3.1 m
floor level -3.1 m

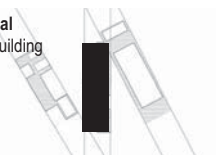


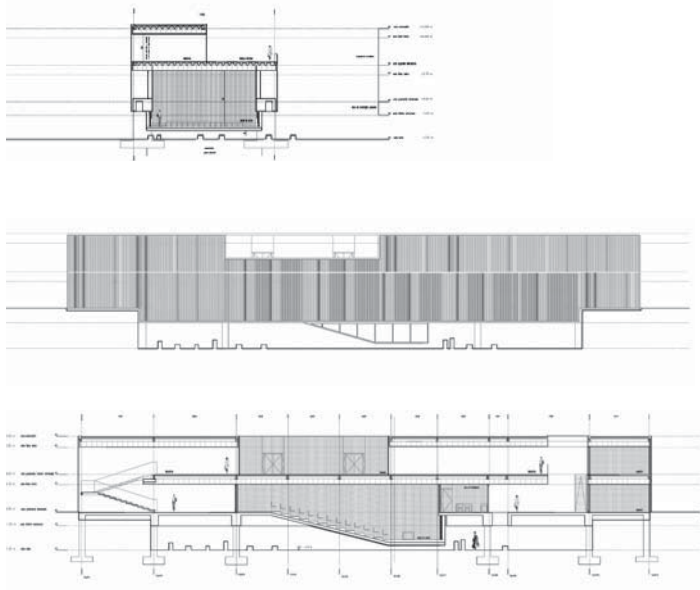


alzados y secciones del edificio del albergue
elevations and sections of the reception centre building

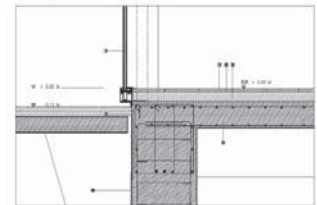
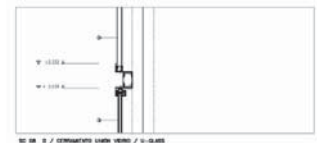
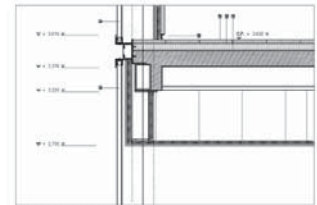
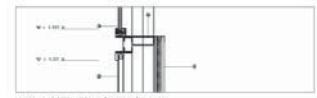
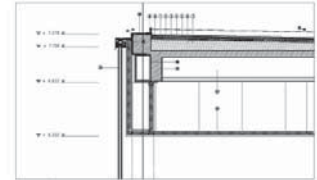
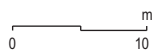
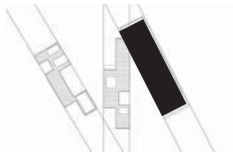


alzados y secciones del edificio administrativo y social
elevations and sections of the administrative and social building





alzados y secciones del auditorio
elevations and sections of the auditorium



detalle constructivo
constructive detail

